



131 County Rd. 34E.
Jackson, MN 56143
www.hitchdoc.com

Telephone 1-800-446-8222
507-847-4049
Fax 507-847-5100
questions@hitchdoc.com

HARLEY TRI GLIDE ULTRA CLASSIC

H15238 - 02.01.11 and newer Installation Instructions

ALWAYS CHECK BOLT LENGTH FOR TIRE CLEARANCE

Note: The 2009-2010 model bikes use hitch H15235. The 2011 model bike had a frame change during production, any build dates after February 2011 require hitch H15238.

This hitch is designed for a completely stock motorcycle. If the rear shocks, suspension, or tire have been adjusted/changed in any way, it is up to the customer to verify that there isn't any interference between the hitch and any part of the motorcycle.

These instructions are written as you are installing the hitch from the back of the bike so "left" would refer to the roadside and "right" would refer to the curbside.

Have a friend help with installing the hitch. We recommend that you use "Loctite" (blue) on all bolts so that they do not come loose during your ride.

Read all instructions carefully before attempting installation. Do not fully tighten bolts until installation is complete, unless instructed to do so.

1. Unpack the hitch and verify that all parts and fasteners are present and free of defects. Refer to the included hitch drawing to help identify the parts included with the hitch.
2. Start by loosening the exhaust mufflers from the frame mounts, this will help give you room when installing the hitch, you can also remove the exhaust if you wish.
3. Next remove the two tamper resistant Torx head bolts (Torx head bolts may not be present on all bikes, they may be 5/16" hex head bolts), which can be accessed from underneath the bike and are located on the cross member underneath the rear trunk closest to rear of bike. A Torx bit driver is supplied with the kit [Item 17, HDW314]. These bolts are replaced with 5/16" x 1-1/4" hex bolts which are included with the kit.
4. Now insert the bolt mount plate [Item 1, H15238 500] on top of the middle cross member, slide it in from the front side of the bike, and let it sit down inside the cross member.
5. Next insert the painted receiver hitch [Item 2, H15238P] up underneath the trunk frame. Once the hitch is in place you can bolt it to the frame cross members using (2) 5/16" x 1-

1/4" hex bolts [Item 7, H17105]. Use the (2) 3/8" x 1-1/4" hex bolts [Item 18, HDW417] to bolt the hitch to the middle cross member which is the one that the supplied bolt mount plate is installed on top of. Once everything is loosely bolted in place you can tighten all the bolts, be sure to go in a criss-cross pattern to keep everything square on the bike.

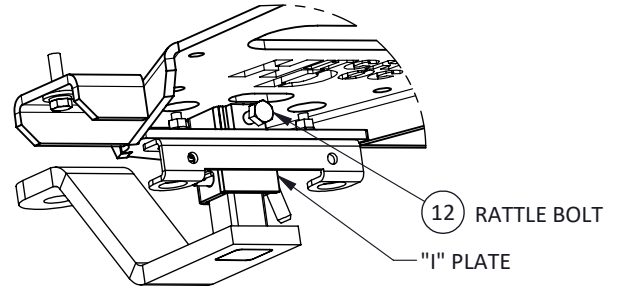
6. Now, you can re-install the exhaust if you removed it, or just tighten the mufflers back up to the frame mounts.
7. (Optional) Install the mud flap/safety chain bracket [Item 14, H19902] using the 1/4"-20 x 1" hex bolts [Item 6, H17019], 1/4" flat washers [Item 5, H17008], 1/4" lock washers [Item 3, H17003], and 1/4" hex nuts [Item 4, H17004].
8. Insert the shaft of the chrome receiver [Item 13, H18110C] up into the bottom of the painted receiver bracket and temporarily insert the receiver pin [Item 10, H17890C] through the holes of both parts (it doesn't matter which side of the bracket the pin is inserted). To remove excess rattle, tighten the 3/8"-24 x 3/4" rattle bolt [Item 12, H17903] on the front side of the hitch (behind the tire). Keep tightening until when you remove the pin, the receiver stays in place. Now, holding onto the bottom of the receiver, slowly loosen the bolt (about a quarter turn or less) until the receiver is able to be removed from the hitch. Reinsert the receiver and the pin and secure it by inserting the hair pin clip [Item 11, H17899] into the hole in the end of the pin by pushing firmly until the middle of the clip is over the pin.

It is the operator's responsibility to periodically check all fasteners/mounting hardware to ensure none have come loose during use and to check for any signs of wear.

Thank you for purchasing a quality hitch made by Hitchdoc, Mfg. Enjoy!

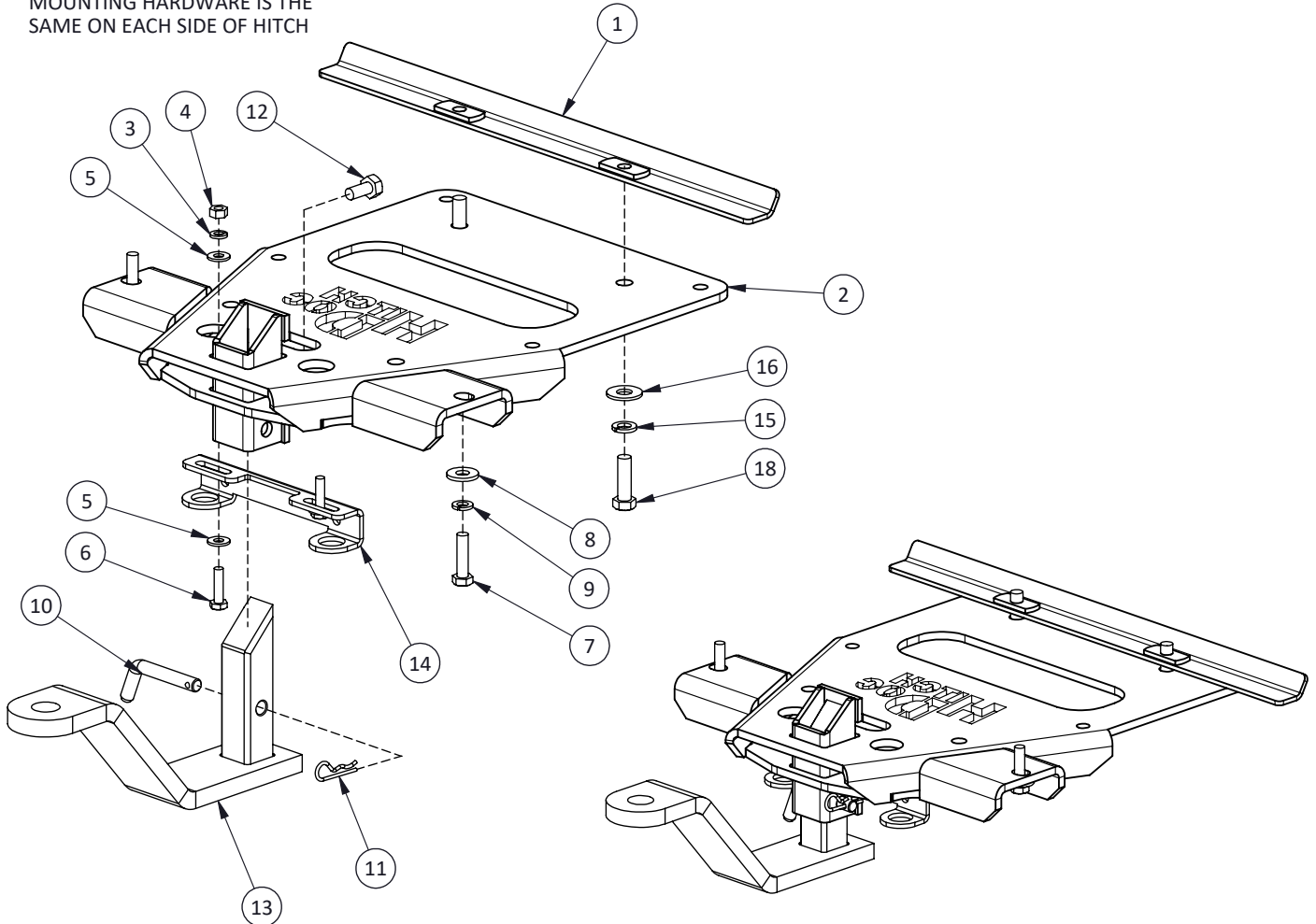
H15238 HD TRI GLIDE, 02.2011 TO 2019

ITEM NO.	PART NUMBER	QTY.	DESCRIPTION
1	H15238 500	1	BOLT MOUNT WLDMT, 17"
2	H15238P	1	TRI GLIDE HITCH WELDMENT
3	H17003	2	WASHER, 1/4" SPLIT-LOCK, ZN
4	H17004	2	NUT, 1/4"-20 HEX, ZN
5	H17008	4	WASHER, 1/4" FLAT USS, ZINC
6	H17019	2	BOLT, 1/4"-20 X 1 HEX, GR5 ZN
7	H17105	2	BOLT, 5/16"-18 X 1-1/4 HEX, GR5 ZN
8	H17109	2	WASHER, 5/16" FLAT, ZN
9	H17111	2	WASHER, 5/16" SPLIT-LOCK, ZN
10	H17890C	1	RECEIVER PIN, SHORT
11	H17899	1	HAIR PIN, 3/32" X 1-1/4, ZINC
12	H17903	1	BOLT, 3/8"-24 X 3/4 HEX, ZN (RATTLE BOLT)
13	H18110C	1	REC'R WLDMT, 8", 3.50" OFFSET
14	H19902	1	TOW HOOK/MUDFLAP BRACKET
15	HDW112	2	WASHER, 3/8" SPLIT-LOCK, ZN
16	HDW126	2	WASHER, 3/8 FLAT USS, ZN
17	HDW314	1	TAMPER RESISTANT TORX BIT
18	HDW417	2	BOLT, 3/8"-16 X 1-1/4 HEX, GR5 ZN



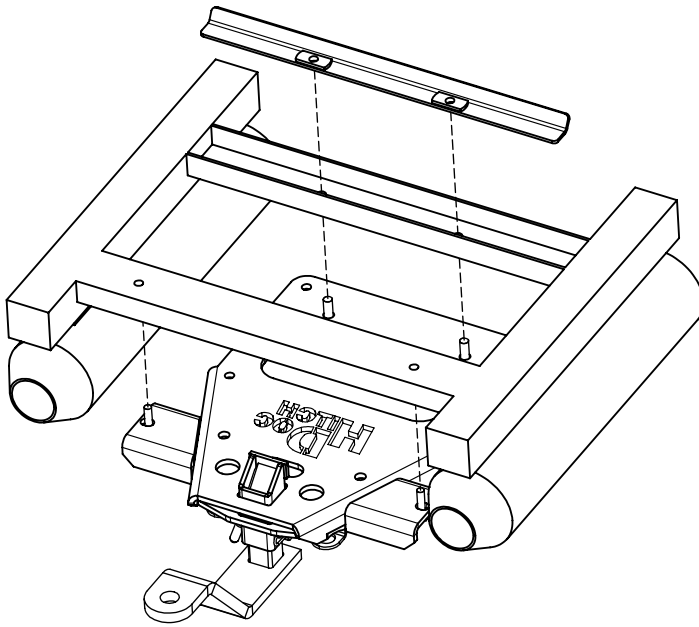
PARTIAL FRONT VIEW OF HITCH ASSEMBLY

MOUNTING HARDWARE IS THE SAME ON EACH SIDE OF HITCH

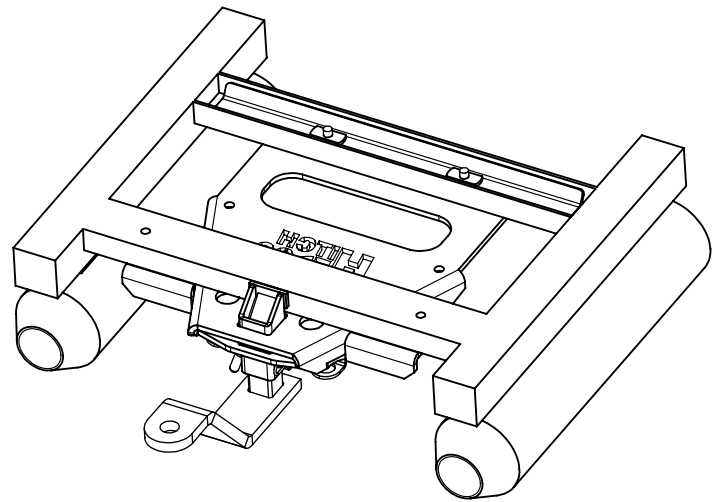


ASSEMBLED VIEW

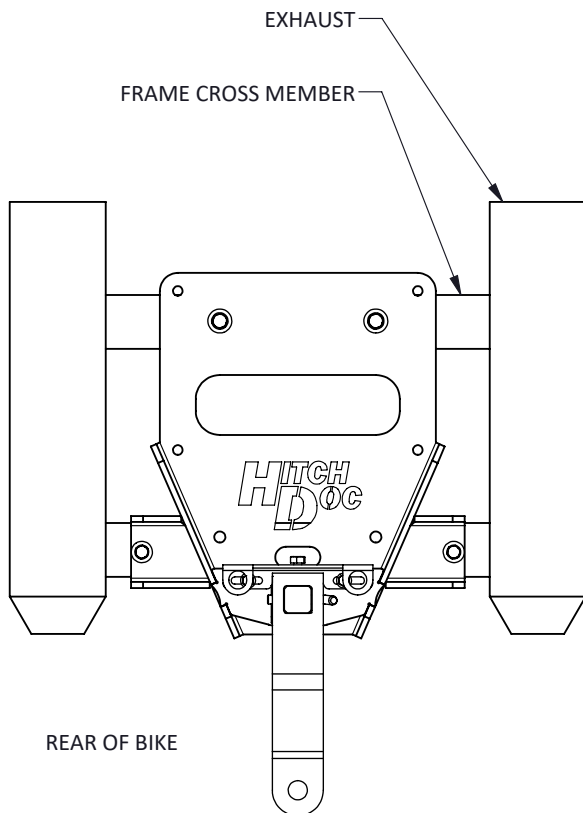
H15238 HD TRI GLIDE, 02.2011 TO 2019



PARTIAL INSTALLATION VIEW



COMPLETE INSTALLATION VIEW



REAR OF BIKE

**VIEW FROM UNDER BIKE
LOOKING UP FROM BOTTOM OF FRAME**