



131 County Rd. 34E.
Jackson, MN 56143
www.hitchdoc.com

Telephone 1-800-446-8222
507-847-4049
Fax 507-847-5100
questions@hitchdoc.com

Harley Davidson Tri-Glide (2009-2011 & 2020+) H15235 Installation Instructions

ALWAYS CHECK BOLT LENGTH FOR TIRE CLEARANCE

This hitch is designed for a completely stock motorcycle. If the rear shocks, suspension, or tire have been adjusted/changed in any way, it is up to the customer to verify that there isn't any interference between the hitch and any part of the motorcycle.

These instructions are written as you are installing the hitch from the back of the bike so "left" would refer to the roadside and "right" would refer to the curbside.

Have a friend help with installing the hitch. We recommend that you use "Loctite" (blue) on all bolts so that they do not come loose during your ride.

Read all instructions carefully before attempting installation. Do not fully tighten bolts until installation is complete, unless instructed to do so.

Tools:	
3/8 Drive Ratchet	7/16 Wrench & Socket
1/2 Socket	9/16 Socket
Tamper resistant Torx bit (provided)	

For all Bike models (reference Figure 1 on page 3):

1. (Optional) Install the mud flap/safety chain bracket [Item 10, H19902] using the 1/4"-20 x 1" hex bolts [Item 5, H17019], 1/4" flat washers [Item 4, H17008], 1/4" lock washers [Item 2, H17003], and 1/4" hex nuts [Item 3, H17004].
2. Note the "rattle bolt" (Item 8, H17903) in the threaded hole on the backside of the receiver channel. This is not supposed to be a through hole. In a later step, the bolt will be tightened causing the plate on the inside to deform and apply pressure over a larger area of the receiver shaft than a bolt alone would.

For 2009 to Feb. 2011 Bikes reference Figure 2A on page 4.

For Feb. 2011 to Dec. 2011 Bikes reference Figure 2B on page 4.

3. Remove the four tamper-resistant Torx head bolts (only on the 2009-2010 models) using the provided Torx bit [Item 11 Figure 1, HDW314 (not shown)]. These can be accessed from underneath the bike and are located on the cross members underneath the rear trunk.

4. Lift the hitch up to the underside of the bike and line up the appropriate set of holes in the hitch with the locations where the Torx head bolts were removed in Step 3. Place a 5/16" lock washer [Item 4 Figure 2A, H17111] and 5/16" flat washer [Item 3 Figure 2A, H17109] on all four of the 5/16"-18 x 1-1/4" hex bolts [Item 2 Figure 2A, H17105]. Insert each of the bolts through the appropriate holes in the hitch and thread into the underside of the bike. Do not fully tighten.

For 2020+ Bikes (reference Figure 3 on page 4):

5. Insert the longer bolt mount plate [Item 3, H15238 500] on top of the middle cross member sliding it in from the rear side of the bike so that it sits down inside the cross member. There may be some wiring that needs to be slightly adjusted to allow the bolt mount plate to sit down in the channel.
6. Insert the shorter bolt mount plate [Item 2, H15235 500] on top of the rear cross member sliding it in from the rear side of the bike so that it sits down inside the cross member.
7. Lift the hitch [Item 1, H15235U] up to the underside of the bike and line the four larger holes in the hitch up with the locations where the bolt mount plates are. Place a 3/8" lock washer [Item 4, HDW112] and a 3/8" flat washer [Item 5, HDW126] on all four of the 3/8"-16 x 1-1/4" hex bolts [Item 6, HDW417]. Insert each bolt through the holes in the hitch and thread into the bolt plate above. Do not fully tighten.

For all Bike models:

8. Once all four bolts have been started, square the hitch up to the bike and then fully tighten all of the bolts working in a criss-cross pattern to keep the hitch straight. Re-tighten any other bolts that were loosened during the hitch install (if applicable).
9. Reference Figure 1. Insert the shaft of the chrome receiver [Item 9, H18110C] up into the bottom of the painted receiver bracket and temporarily insert the receiver pin [Item 6, H17890C] through the holes of both parts (it doesn't matter which side of the bracket the pin is inserted). To remove excess rattle, tighten the 3/8"-24 x 3/4" rattle bolt [Item 8, H17903] on the front side of the hitch (behind the tire). Keep tightening until when you remove the pin, the receiver stays in place. Now, holding onto the bottom of the receiver, slowly loosen the bolt (about a quarter turn or less) until the receiver is able to be removed from the hitch. Reinsert the receiver and the pin and secure it by inserting the hair pin clip [Item 7, H17899] into the hole in the end of the pin by pushing firmly until the middle of the clip is over the pin.

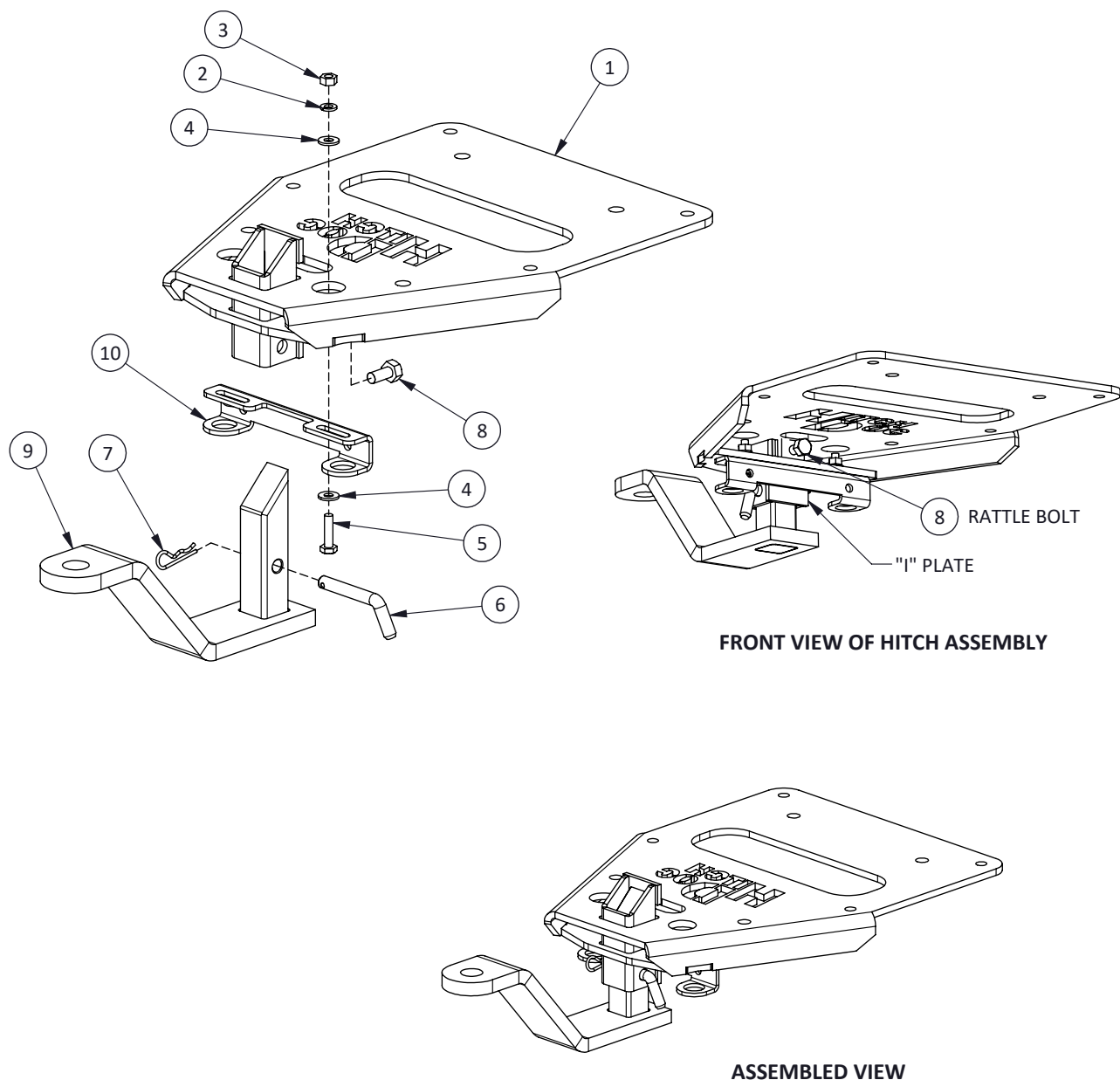
It is the operator's responsibility to periodically check all fasteners/mounting hardware to ensure none have come loose during use and to check for any signs of wear.

Thank you for purchasing a quality hitch made by HitchDoc, Mfg. Enjoy!

H15235 HD TRI GLIDE 2009-11, 2020-21

ITEM NO.	PART NUMBER	QTY.	DESCRIPTION
1	H15235U	1	TRI-GLIDE 09-11 HITCH WLDMT
2	H17003	2	WASHER, 1/4" SPLIT-LOCK, ZN
3	H17004	2	NUT, 1/4"-20 HEX, ZN
4	H17008	4	WASHER, 1/4" FLAT USS, ZINC
5	H17019	2	BOLT, 1/4"-20 X 1 HEX, GR5 ZN
6	H17890C	1	RECEIVER PIN, SHORT
7	H17899	1	HAIR PIN, 3/32" X 1-1/4, ZINC
8	H17903	1	BOLT, 3/8"-24 X 3/4 HEX, ZN (RATTLE BOLT)
9	H18110C	1	REC'R WLDMT, 8", 3.50" OFFSET
10	H19902	1	TOW HOOK/MUDFLAP BRACKET
11	HDW314	1	TAMPER RESISTANT TORX BIT

FIGURE 1:
ASSEMBLY COMMON TO ALL BIKE MODEL YEARS



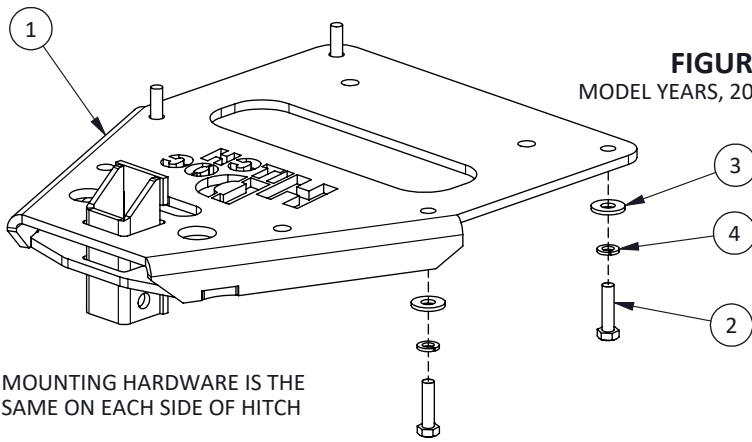
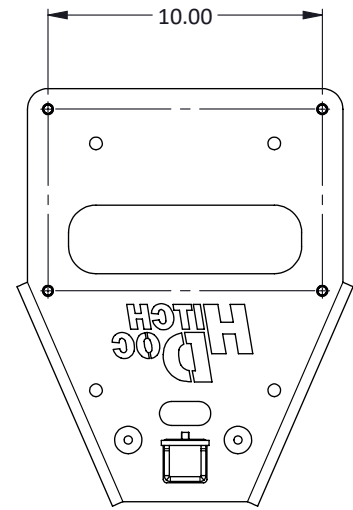


FIGURE 2A:
MODEL YEARS, 2009 TO FEB. 2011



TOP VIEW OF HITCH
BOLT PATTERN

ITEM NO.	PART NUMBER	QTY.	DESCRIPTION
1	H15235U	1	TRI-GLIDE 09-11 HITCH WLDMT
2	H17105	4	BOLT, 5/16"-18 X 1-1/4 HEX, GR5 ZN
3	H17109	4	WASHER, 5/16" FLAT, ZN
4	H17111	4	WASHER, 5/16" SPLIT-LOCK, ZN

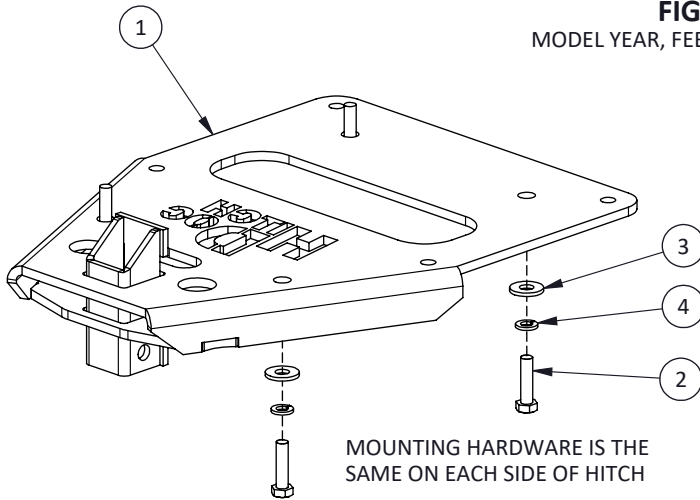
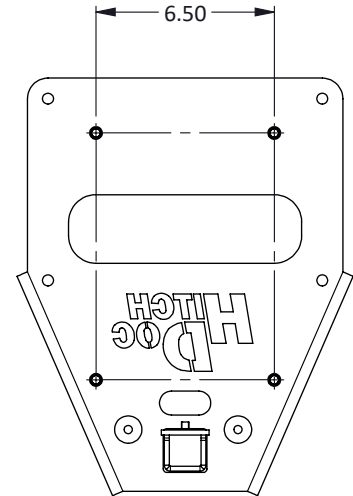


FIGURE 2B:
MODEL YEAR, FEB. 2011 THRU DEC. 2011



TOP VIEW OF HITCH
BOLT PATTERN

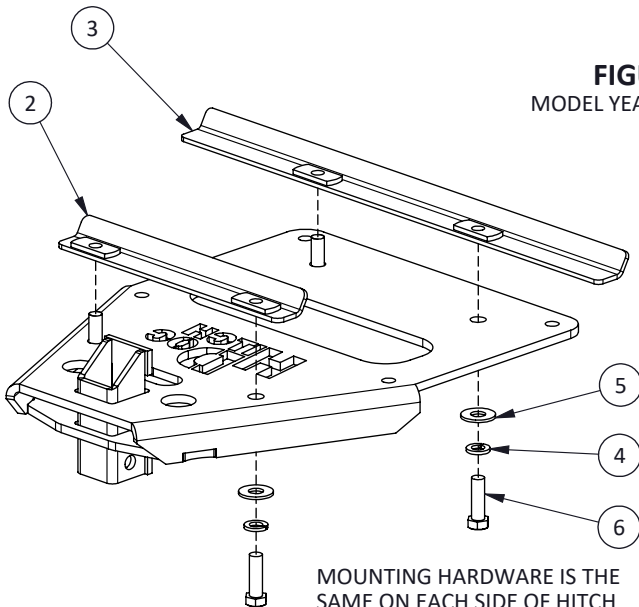


FIGURE 3:
MODEL YEARS, 2020-2021

ITEM NO.	PART NUMBER	QTY.	DESCRIPTION
1	H15235U	1	TRI-GLIDE 09-11 HITCH WLDMT
2	H15235 500	1	BOLT MOUNT WLDMT, 9"
3	H15238 500	1	BOLT MOUNT WLDMT, 17"
4	HDW112	4	WASHER, 3/8" SPLIT-LOCK, ZN
5	HDW126	4	WASHER, 3/8 FLAT USS, ZN
6	HDW417	4	BOLT, 3/8"-16 X 1-1/4 HEX, GR5 ZN