



131 County Rd. 34E  
Jackson, MN 56143  
[www.hitchdoc.com](http://www.hitchdoc.com)

Telephone 1-800-446-8222  
507-847-4049  
Fax 507-847-5100  
[questions@hitchdoc.com](mailto:questions@hitchdoc.com)

## HARLEY DAVIDSON ULTRA CLASSIC '09 – '13 H15220 Installation Instructions

**\*ALWAYS CHECK BOLT LENGTH FOR TIRE CLEARANCE\***

**This hitch is designed for a completely stock motorcycle. If the rear shocks, suspension, or tire have been adjusted/changed in any way, it is up to the customer to verify that there isn't any interference between the hitch and any part of the motorcycle.**

These instructions are written as you are installing the hitch from the back of the bike, so "left" would refer to the roadside and "right" would refer to the curbside.

Have a friend help with installing the hitch. We recommend that you use "Loctite" (blue) on all bolts so that they do not come loose during your ride.

Read all instructions carefully before attempting installation. Do not fully tighten bolts until installation is complete, unless instructed to do so.

1. Unpack the hitch and verify that all parts and fasteners are present and free of defects. Refer to the included hitch drawing to help identify the parts included with the hitch.
2. (Optional) Install the mud flap/safety chain bracket [*Item 15, H19904*] using the 1/4"-20 x 1" hex bolts [*Item 5, H17019*], 1/4" flat washers [*Item 4, H17008*], 1/4" lock washers [*Item 2, H17003*], and 1/4" hex nuts [*Item 3, H17004*].
3. Remove the hard bags from the motorcycle and the two chrome bars that go around the bottom of the hard bags on both sides of the motorcycle. These will be reinstalled after the hitch is installed.
4. Locate the chrome strut cover on the right side of the bike and remove the seat strap bolt and the 5/16" Torx head bolt holding on the strut cover. Repeat for the opposite side.
5. Locate the three mounting points on the motorcycle strut that are underneath the chrome cover removed in Step 2. Remove the two Torx head bolts on each side of the motorcycle. It will be necessary to support the trunk of the motorcycle before the bolts are removed. Slide the hitch into place from the rear of the motorcycle and locate it on top of the strut and line up the three mounting holes. It may be necessary to spread the hitch to allow it to clear the strut. Two people are strongly suggested for this step. Install only the two outer bolts [*Item 8, H17105*] with blue "Loctite" and two washers [*Item 4, H17008*] on each side of the hitch and leave loose to allow for adjustment.

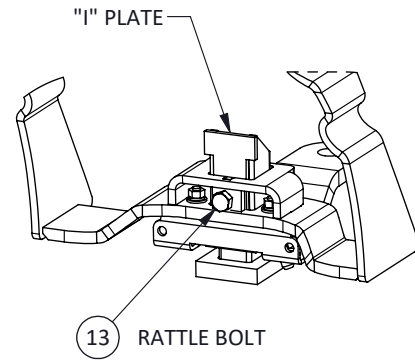
6. Reinstall the chrome bars that go around the hard bags that were removed in Step 2. Check the hitch for proper clearance around the tubes and clearance for the hitch on the motorcycle fender. Adjust as necessary and tighten the four mounting bolts on the hitch.
7. Reinstall the chrome strut cover that was removed in Step 2. Install a new longer 5/16"-18 x 1-1/2" bolt [*Item 7*, H17044] with blue "Loctite" each side to hold the covers on. Be sure to use the two spacers between the cover and the hitch arms. The wider spacer [*Item 10*, H17522] is used on the hole that holds the cover on and the narrow spacer [*Item 9*, H17512] on the hole for the seat strap. Reinstall the seat strap bolt.
8. Insert the shaft of the chrome receiver [*Item 14*, H18050] up into the receiver bracket and temporarily insert the receiver pin [*Item 11*, H17890C] through the holes of both parts (it doesn't matter which side of the bracket the pin is inserted). To remove excess rattle, tighten the 3/8"-24 x 3/4" rattle bolt [*Item 13*, H17913] on the front side of the hitch (behind the tire). Keep tightening until when you remove the pin, the receiver stays in place. Now, holding onto the bottom of the receiver, slowly loosen the bolt (about a quarter turn or less) until the receiver is able to be removed from the hitch. Reinsert the receiver and the pin and secure it by inserting the hair pin clip [*Item 12*, H17899] into the hole in the end of the pin by pushing firmly until the middle of the clip is over the pin.

It is the operator's responsibility to periodically check all fasteners/mounting hardware to ensure none have come loose during use and to check for any signs of wear.

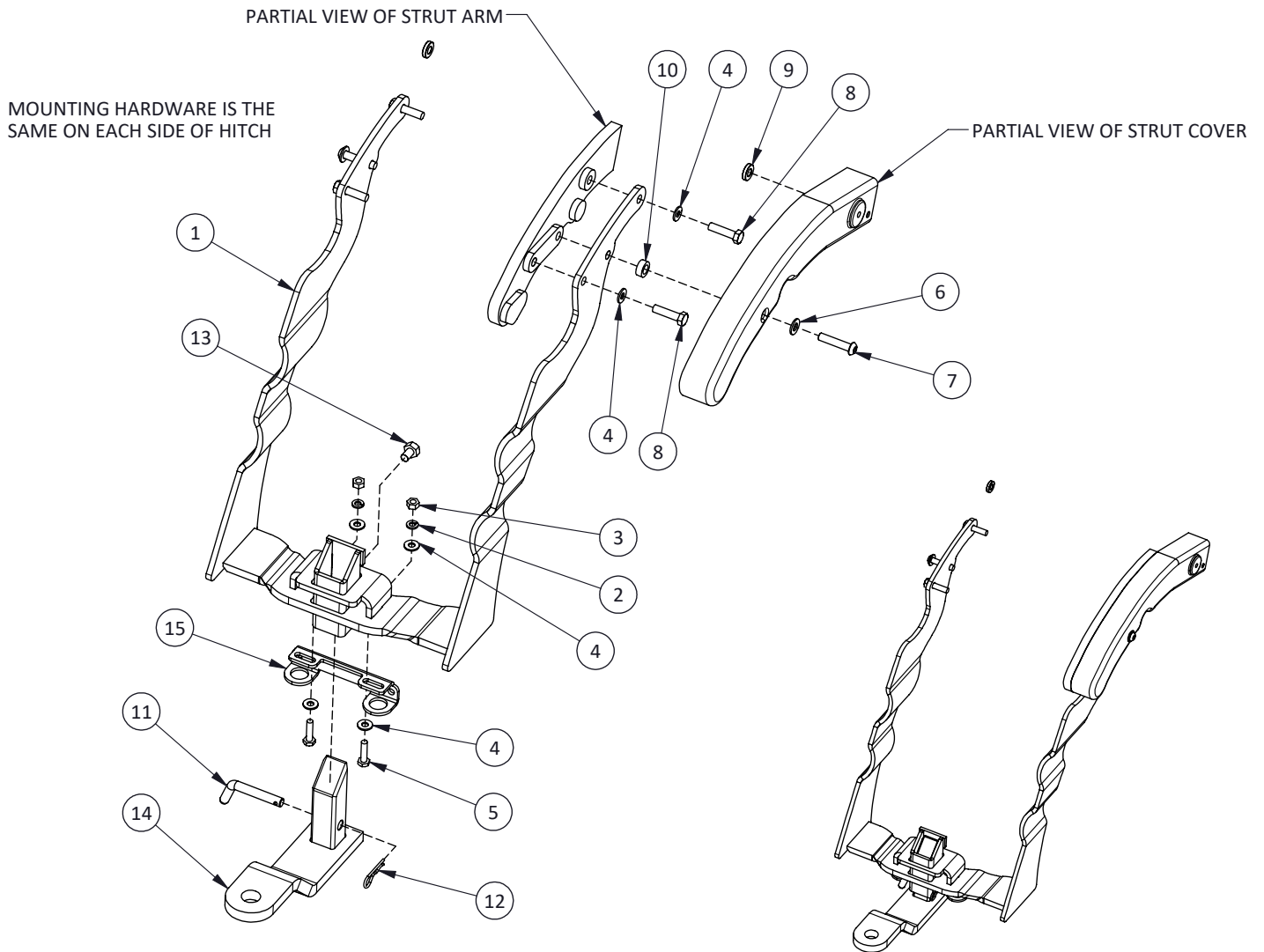
Thank you for purchasing a quality hitch made by HitchDoc, Mfg. Enjoy!

# H15220 HARLEY DAVIDSON ULTRA CLASSIC 2009-2013 HITCH

ITEM NO.	PART NUMBER	QTY.	DESCRIPTION
1	H15220C	1	CHROME HITCH
2	H17003	2	WASHER, 1/4" SPLIT-LOCK, ZN
3	H17004	2	NUT, 1/4"-20 HEX, ZN
4	H17008	8	WASHER, 1/4" FLAT USS, ZINC
5	H17019	2	BOLT, 1/4"-20 X 1 HEX, GR5 ZN
6	H17039	2	WASHER, 5/16" FLAT, CHROME
7	H17044	2	BOLT, 5/16"-18X1-1/2 BTNSKHD, CHROME
8	H17105	4	BOLT, 5/16"-18 X 1-1/4 HEX, GR5 ZN
9	H17512	2	BUSHING, 0.70 OD X 0.33 ID X 0.16, CHROME
10	H17522	2	BUSHING, 0.68 OD X 0.41 ID X 0.26, CHROME
11	H17890C	1	RECEIVER PIN, SHORT
12	H17899	1	HAIR PIN, 3/32" X 1-1/4, ZINC
13	H17913	1	BOLT, 3/8"-24 X 1/2 HEX, GR5 ZN
14	H18050	1	RETRO REC'R WLDMT, 6" X 1-1/2" OFFSET
15	H19904	1	TOW HOOK/MUDFLAP BRACKET



PARTIAL FRONT VIEW OF ASSEMBLED HITCH



HDW2938  
REVB ECO 1611

REPRODUCTION IN PART OR AS A WHOLE WITHOUT THE WRITTEN PERMISSION OF HITCHDOC, MFG. IS PROHIBITED.

**\*ALWAYS CHECK BOLT LENGTH FOR TIRE CLEARANCE\***