



131 County Rd. 34E.  
 Jackson, MN 56143  
 www.hitchdoc.com

Telephone 1-800-446-8222  
 507-847-4049  
 Fax 507-847-5100  
 questions@hitchdoc.com

## Harley Davidson Street Glide 2014-2015 H15216 Installation Instructions

**\*ALWAYS CHECK BOLT LENGTH FOR TIRE CLEARANCE\***

**This hitch is designed for a completely stock motorcycle. If the rear shocks, suspension, or tire have been adjusted/changed in any way, it is up to the customer to verify that there isn't any interference between the hitch and any part of the motorcycle.**

These instructions are written as you are installing the hitch from the back of the bike so "left" would refer to the roadside and "right" would refer to the curbside.

Have a friend help with installing the hitch. We recommend that you use "Loctite" (blue) on all bolts so that they do not come loose during your ride.

Read all instructions carefully before attempting installation. Do not fully tighten bolts until installation is complete, unless instructed to do so.

<b>Tools:</b>		
T-30 Torx Bit	9/16" Wrench	3/16" Allen Wrench
T-40 Torx Bit	1/2" Wrench/Socket	

1. Unpack the hitch and verify that all parts and fasteners are present and free of defects. Refer to the included hitch drawing to help identify the parts included with the hitch.
2. Open the saddle bags and untwist the Dzus "quarter turn" fasteners to release the bags from the bike.
3. Remove the 5/16" Torx head bolt in the saddle bag mount bracket that is closest to the fender. Re-insert the bolt from the rear of the bike. Do not re-secure the nut, this will be done in a later step. Repeat for the other side of the bike.
4. Remove the two 5/16" Torx head bolts that go through the strut cover on each side of the bike. Place the longer chrome spacer [Item 12, H17547] into the bolt hole closest to the front of the bike. Place the shorter chrome spacer [Item 11, H17522] in the bolt hole near the rear of the bike. Repeat for the other side.

Note: Two people are strongly recommended for the following step:

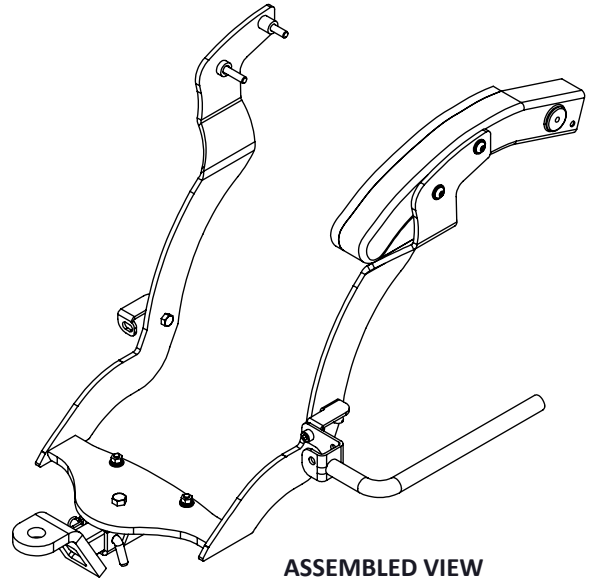
5. Slide the hitch in place from the rear of the motorcycle taking care not to bump it against the bike. Line the hitch up with the two holes in the strut cover and install (2) 5/16" x 1-3/4" chrome button head bolts [Item 18, HDW813] and (2) 5/16" flat chrome washers [Item 8, H17039] on each side. Leave the bolts loose for now to allow for some adjustment.
6. Align the slot in the right support bracket [Item 3, H15225 500] with the lower hole on the right side arm. Insert (1) 5/16" hex bolt [Item 9, H17101] from the inside of the hitch through the hole in the arm and the slot on the support bracket, place a 5/16" chrome flat washer [Item 8, H17039] and a 5/16" chrome acorn nut [Item 10, H17113] on the bolt to secure the bracket to the side arm of the hitch.
7. Align the other slot on the bracket with the bolt that was reversed in Step 3 and secure it to the saddle bag bracket using the factory nut that was also removed in Step 3. Leave the bolt slightly loose so that the hitch can be positioned correctly first. Repeat Steps 7 and 8 for the left side of the bike using the left support bracket [Item 2, H15225 400].
8. Check the hitch for clearance on the fender of the motorcycle and underneath the fender for tail light clearance. Adjust and center as desired, then tighten the (4) 5/16" bolts at the top of the hitch that were installed in Step 6 working in a criss-cross pattern to keep the hitch square.
9. Adjust the support brackets that were installed in Steps 7 and 8 as necessary and tighten the fasteners.
10. (Optional) Install the mud flap/safety chain bracket [Item 17, H19914] using the 1/4"-20 x 1" hex bolts [Item 7, H17019], 1/4" flat washers [Item 6, H17008], 1/4" lock washers [Item 4, H17003], and 1/4" hex nuts [Item 5, H17004].
11. Insert the shaft of the chrome receiver [Item 16, H18025C] into the painted receiver bracket and temporarily insert the receiver pin [Item 13, H17890C] through the holes of both parts (it doesn't matter which side of the bracket the pin is inserted). To remove excess rattle, tighten the 3/8"-24 x 1/2" rattle bolt [Item 15, H17913] on the top side of the hitch (above the bracket). Keep tightening until when you remove the pin, the receiver stays in place. Now, holding onto the receiver, slowly loosen the bolt (about a quarter turn or less) until the receiver is able to be removed from the hitch. Reinsert the receiver and the pin and secure it by inserting the hair pin clip [Item 14, H17899] into the hole in the end of the pin by pushing firmly until the middle of the clip is over the pin.

It is the operator's responsibility to periodically check all fasteners/mounting hardware to ensure none have come loose during use and to check for any signs of wear.

Thank you for purchasing a quality hitch from HitchDoc, Mfg. Enjoy!

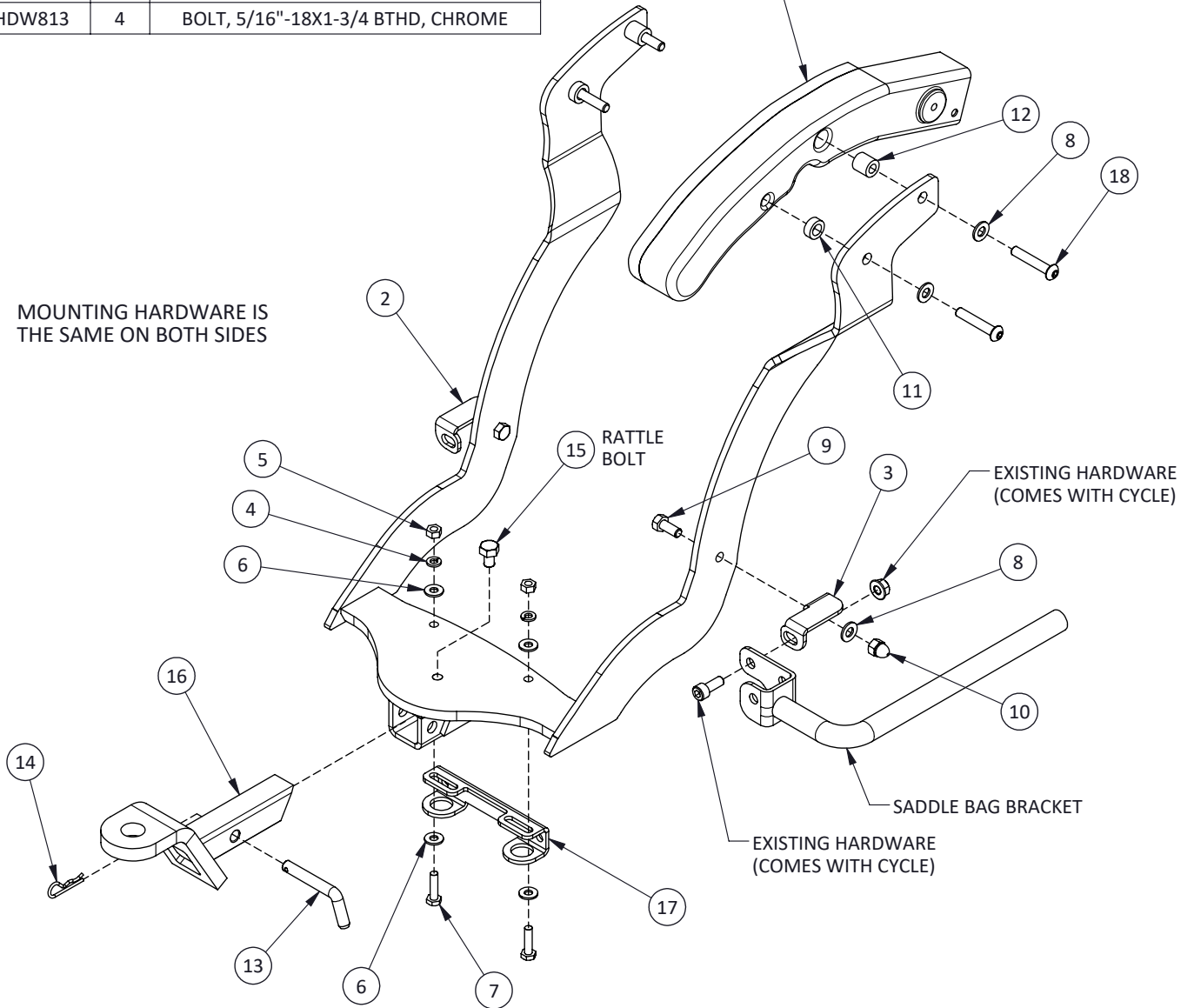
# H15216 HD STREETGLIDE 2014-2015 HITCH

ITEM NO.	PART NUMBER	QTY.	DESCRIPTION
1	H15216C	1	HITCH WLDMT, STREETGLIDE '14-'15
2	H15225 400	1	SUPPORT BRACKET, LEFT
3	H15225 500	1	SUPPORT BRACKET, RIGHT
4	H17003	2	WASHER, 1/4" SPLIT-LOCK, ZN
5	H17004	2	NUT, 1/4"-20 HEX, ZN
6	H17008	4	WASHER, 1/4" FLAT USS, ZINC
7	H17019	2	BOLT, 1/4"-20 X 1 HEX, GR5 ZN
8	H17039	6	WASHER, 5/16" FLAT, CHROME
9	H17101	2	BOLT, 5/16"-18 X 3/4 HEX, ZINC
10	H17113	2	ACORN NUT, 5/16"-18 HEX, CHROME
11	H17522	2	BUSHING, 0.68 OD X 0.41 ID X 0.26, CHROME
12	H17547	2	BUSHING, 0.63 OD X 0.33 ID X 0.63, CHROME
13	H17890C	1	RECEIVER PIN, SHORT
14	H17899	1	HAIR PIN, 3/32" X 1-1/4, ZINC
15	H17913	1	BOLT, 3/8"-24 X 1/2 HEX, GR5 ZN
16	H18025C	1	RECEIVER, ANGLED 2" O.S., CHROME
17	H19914	1	TOW HOOK/MUDFLAP BRACKET
18	HDW813	4	BOLT, 5/16"-18X1-3/4 BTHD, CHROME



PARTIAL VIEW OF STRUT & CHROME STRUT COVER

MOUNTING HARDWARE IS THE SAME ON BOTH SIDES



HDW914  
REVC ECO 1611

REPRODUCTION IN PART OR AS A WHOLE WITHOUT THE WRITTEN PERMISSION OF HITCHDOC, MFG. IS PROHIBITED.

**\*ALWAYS CHECK BOLT LENGTH FOR TIRE CLEARANCE\***