



131 County Rd. 34E.
Jackson, MN 56143
www.hitchdoc.com

Telephone 1-800-446-8222
507-847-4049
Fax 507-847-5100
questions@hitchdoc.com

Harley Davidson Deuce Hitch

H15200 Installation Instructions

ALWAYS CHECK BOLT LENGTH FOR TIRE CLEARANCE

This hitch is designed for a completely stock motorcycle. If the rear shocks, suspension, or tire have been adjusted/changed in any way, it is up to the customer to verify that there isn't any interference between the hitch and any part of the motorcycle.

These instructions are written as you are installing the hitch from the back of the bike so "left" would refer to the roadside and "right" would refer to the curbside.

Have a friend help with installing the hitch. We recommend that you use "Loctite" (blue) on all bolts so that they do not come loose during your ride.

Read all instructions carefully before attempting installation. Do not fully tighten fasteners until installation is complete, unless instructed to do so.

1. Unpack the hitch and verify that all parts and fasteners are present and free of defects. Refer to the included hitch drawing to help identify the parts included with the hitch.
2. Remove the turn signals. You must clip the wire and reattach after the hitch is installed.
3. Remove chrome fender strut covers by first removing the first two bolts directly under the driver seat (outside). Then remove the four bolts from the inside of the fender (two 3/8" bolts towards the front inside of the fender and two 5/16" bolts toward the back of the fender).

Notes: The fender will drop onto the tire when all the bolts are removed.
The hitch will replace the fender strut covers.

4. Begin by sliding the hitch into place from the rear of the motorcycle. Place the hitch up to the fender and line up the holes.
5. Place two 3/8"-16 x 3/4" button head chrome bolts [Item 9, H17202] into the front holes (under the driver seat). Do this for both sides.
6. Moving back, place two 3/8"-16 x 1-1/4" button head chrome bolts [Item 10, H17203] into the next two holes with a 3/8"-16 hex nut [Item 11, H17207] on both bolts inside the fender. Do this for both sides.

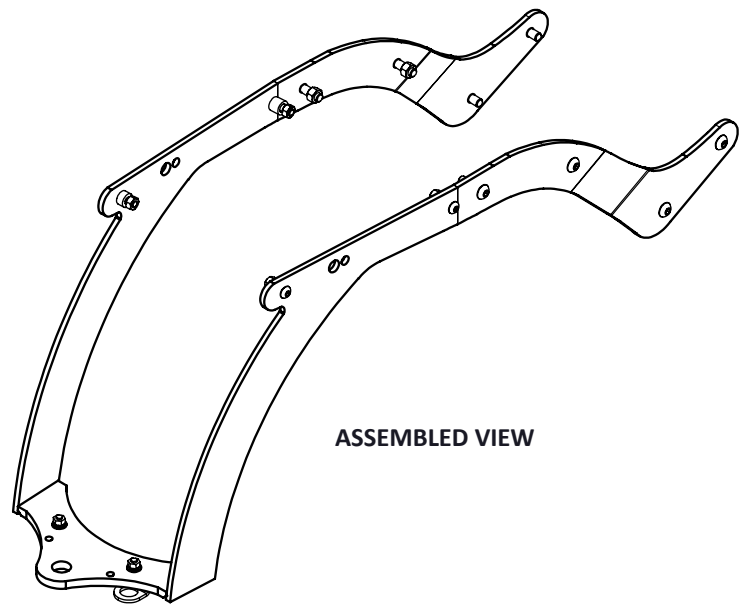
7. Moving back again, insert a 5/16"-18 x 1-1/4" button head bolt [*Item 8, H17116*] into the next hole along with the thicker bushing [*Item 13, H17525*] between the fender and the hitch. In the last (rear) hole in the hitch, insert a 5/16"-18 x 1" button head bolt [*Item 7, H17115*] bolt along with the thinner bushing [*Item 12, H17524*] in between the fender and the hitch. Then, place a 5/16-18" hex nut [*Item 6, H17112*] on both bolts inside the fender. Do this for both sides.
8. Crimp the bullet connectors to the turn signal light wires and bike wires. Plug in.
9. (*Optional*) Install the mud flap/safety chain bracket [*Item 15, H19900*] using the 1/4"-20 x 1" hex bolts [*Item 7, H17019*], 1/4" flat washers [*Item 6, H17008*], 1/4" lock washers [*Item 4, H17003*] and 1/4" hex nuts [*Item 5, H17004*].

It is the operator's responsibility to periodically check all fasteners/mounting hardware to ensure none have come loose during use and to check for any signs of wear.

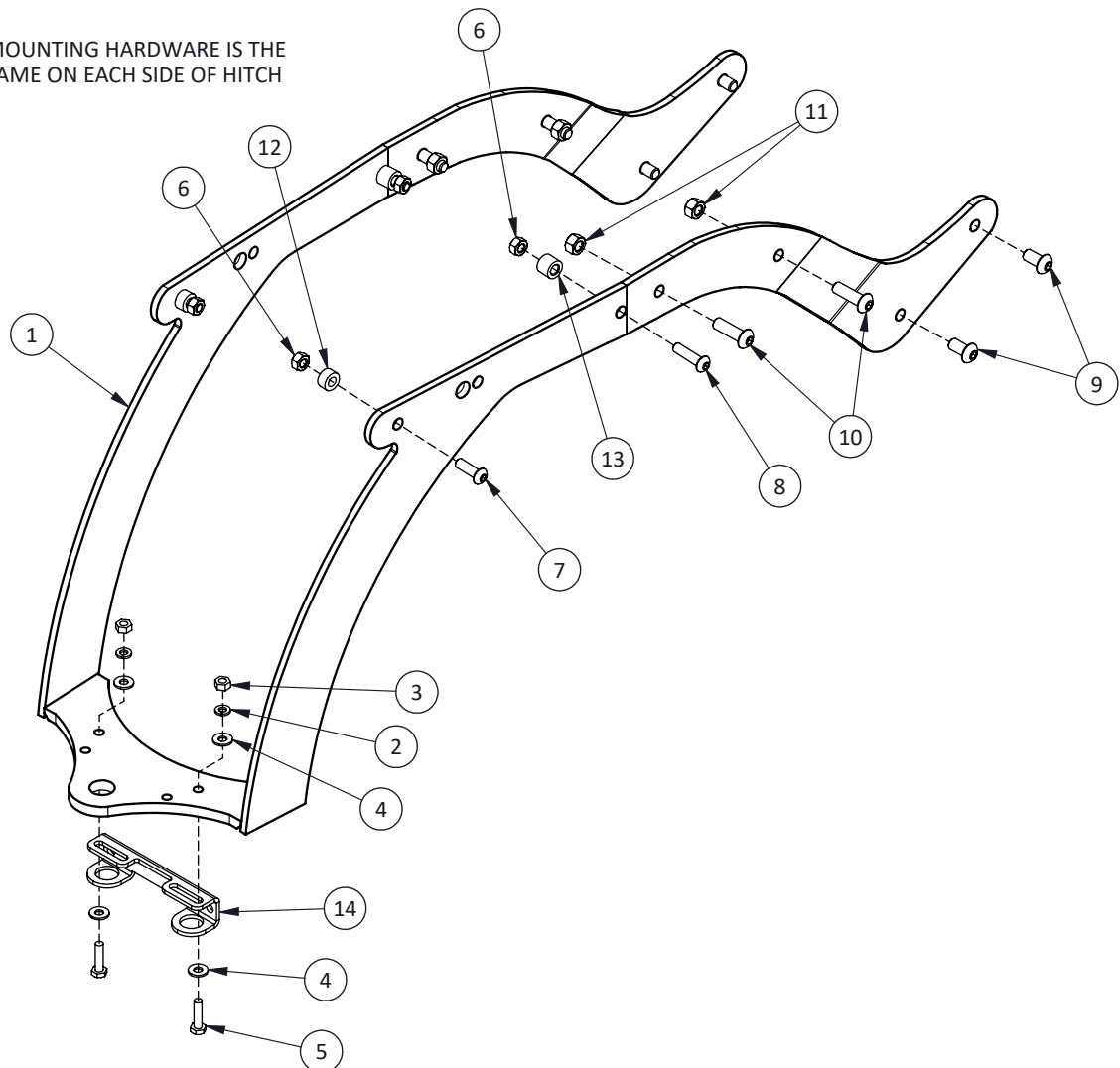
Thank you for purchasing a high quality hitch made by HitchDoc, Mfg. Enjoy!

H15200 HARLEY DAVIDSON DEUCE

ITEM NO.	PART NUMBER	QTY.	DESCRIPTION
1	H15200C	1	CHROME HITCH
2	H17003	2	WASHER, 1/4" SPLIT-LOCK, ZN
3	H17004	2	NUT, 1/4"-20 HEX, ZN
4	H17008	4	WASHER, 1/4" FLAT USS, ZINC
5	H17019	2	BOLT, 1/4"-20 X 1 HEX, GR5 ZN
6	H17112	4	NUT, 5/16"-18 HEX, ZN
7	H17115	2	BOLT, 5/16"-18 X 1 BTNHD, CHROME
8	H17116	2	BOLT, 5/16"-18 X 1-1/4 BTNHD, CHROME
9	H17202	4	BOLT, 3/8"-16 X 3/4 BTNHD, CHROME
10	H17203	4	BOLT, 3/8"-16 X 1-1/4 BTNHD, CHROME
11	H17207	4	NUT, 3/8"-16 HEX, ZN
12	H17524	2	BUSHING
13	H17525	2	BUSHING, 0.50"
14	H19900	1	TOW HOOK/MUDFLAP BRACKET



MOUNTING HARDWARE IS THE SAME ON EACH SIDE OF HITCH



HDW3005
REVA ECO 1611

REPRODUCTION IN PART OR AS A WHOLE WITHOUT THE WRITTEN PERMISSION OF HITCHDOC, MFG. IS PROHIBITED.

ALWAYS CHECK BOLT LENGTH FOR TIRE CLEARANCE