



131 County Rd. 34E.
Jackson, MN 56143
www.hitchdoc.com

Telephone 1-800-446-8222
507-847-4049
Fax 507-847-5100
questions@hitchdoc.com

HARLEY DAVIDSON ROAD KING '07 - '08 H15186 Installation Instructions

ALWAYS CHECK BOLT LENGTH FOR TIRE CLEARANCE

This hitch is designed for a completely stock motorcycle. If the rear shocks, suspension, or tire have been adjusted/changed in any way, it is up to the customer to verify that there isn't any interference between the hitch and any part of the motorcycle.

These instructions are written as you are installing the hitch from the back of the bike so "left" would refer to the roadside and "right" would refer to the curbside.

Have a friend help with installing the hitch. We recommend that you use "Loctite" (blue) on all bolts so that they do not come loose during your ride.

Read all instructions carefully before attempting installation. Do not fully tighten bolts until installation is complete, unless instructed to do so.

1. Unpack the hitch and verify that all parts and fasteners are present and free of defects. Refer to the included hitch drawing to help identify the parts included with the hitch.
2. Remove the saddle bags from the bike and then remove the two bolts on either side of the bike that attach the saddle bag brackets to the bike. These bolts will be replaced with 5/16"-18 x 1" hex bolts [*Item 8, H17104*] which are included with the hitch.
3. Loosely attach the side brackets [*Items 1 & 2, H15185 200/300*] to the hitch each side using (2) 5/16"-18 x 1-1/4" bolts [*Item 9, H17105*], (2) 1/4" flat washers [*Item 7, H17008*], (2) chrome bushings [*Item 12, H17510*], and (2) 5/16" chrome acorn nuts [*Item 11, H17113*]. Insert the receiver hitch into the fender and bolt it to the fender support struts using (3) 5/16"-18 x 1" hex bolts [*Item 8, H17104*]. The two-hole tabs (one on each side) on the receiver hitch bolt to the saddle bag support bracket and any other brackets that were attached to the saddle bag bracket before disassembly using (2) 5/16"-18 x 1-1/4" bolts [*Item 9, H17105*], (2) 1/4" flat washers [*Item 7, H17008*] and (2) 5/16" hex nuts [*Item 10, H17112*]. The brackets mount to the tabs on the front side. The two-hole tabs of the receiver hitch should face the tire and when you stand at the rear of the bike looking towards the front of the bike you should see all the brackets attached to the tabs on the receiver hitch.

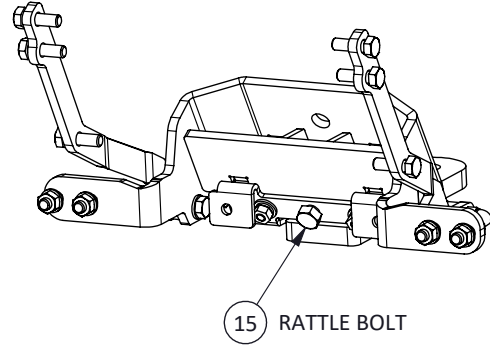
4. Once everything is loosely bolted in place you can tighten all the bolts in a criss-cross pattern to keep everything centered on the bike.
5. (*Optional*) Install the mud flap/safety chain bracket [*Item 17, H19911*] using the 1/4"-20 x 3/4" hex bolts [*Item 4, H17001*], 1/4" flat washers [*Item 7, H17008*], 1/4" lock washers [*Item 5, H17003*], and 1/4" hex nuts [*Item 6, H17004*].
6. Insert the shaft of the chrome receiver [*Item 16, H18080C*] up into the bottom of the painted receiver bracket and temporarily insert the receiver pin [*Item 13, H17890C*] through the holes of both parts (it doesn't matter which side of the bracket the pin is inserted). To remove excess rattle, tighten the 3/8"-24 x 1/2" rattle bolt [*Item 15, H17913*] on the front side of the hitch (behind the tire). Keep tightening until when you remove the pin, the receiver stays in place. Now, holding onto the bottom of the receiver, slowly loosen the bolt (about a quarter turn or less) until the receiver is able to be removed from the hitch. Reinsert the receiver and the pin and secure it by inserting the hair pin clip [*Item 14, H17899*] into the hole in the end of the pin by pushing firmly until the middle of the clip is over the pin.

It is the operator's responsibility to periodically check all fasteners/mounting hardware to ensure none have come loose during use and to check for any signs of wear.

Thank you for purchasing a quality hitch made by Hitchdoc, Mfg. Enjoy!

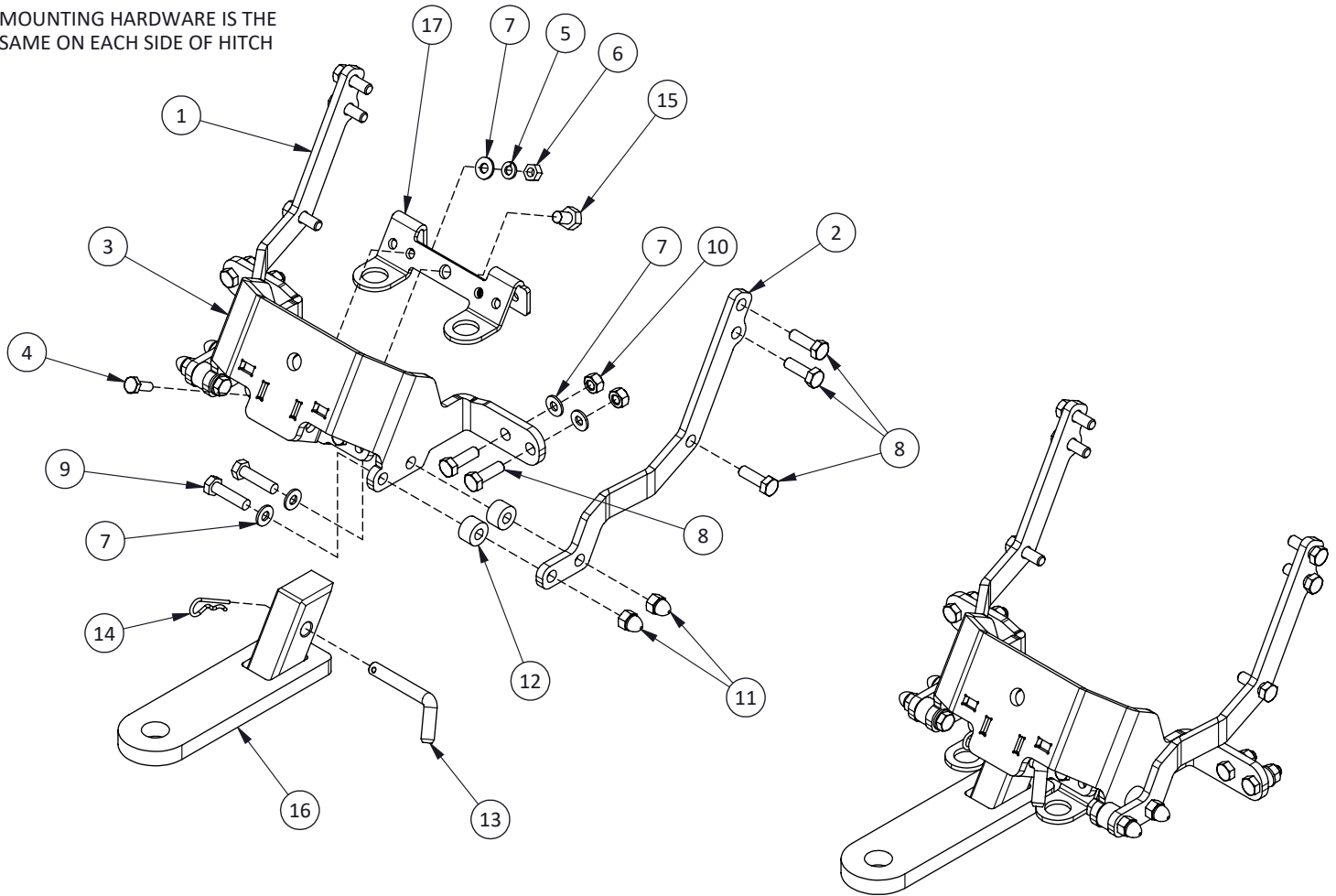
H15186 FLHR ROAD KING 07'-08' HITCH W/REC'R

ITEM NO.	PART NUMBER	QTY.	DESCRIPTION
1	H15185 200	1	LEFT SIDE BRACKET
2	H15185 300	1	RIGHT SIDE BRACKET
3	H15186U	1	FLHR ROAD KING '07
4	H17001	2	BOLT, 1/4"-20 X 3/4 HEX, ZN
5	H17003	2	WASHER, 1/4" SPLIT-LOCK, ZN
6	H17004	2	NUT, 1/4"-20 HEX, ZN
7	H17008	10	WASHER, 1/4" FLAT USS, ZINC
8	H17104	10	BOLT, 5/16"-18 X 1 HEX, GR5 ZN
9	H17105	4	BOLT, 5/16"-18 X 1-1/4 HEX, GR5 ZN
10	H17112	4	NUT, 5/16"-18 HEX, ZN
11	H17113	4	ACORN NUT, 5/16"-18 HEX, CHROME
12	H17510	4	BUSHING, 0.73"ODX0.33"IDX0.46", CHROME
13	H17890C	1	RECEIVER PIN, SHORT
14	H17899	1	HAIR PIN, 3/32" X 1-1/4, ZINC
15	H17913	1	BOLT, 3/8"-24 X 1/2 HEX, GR5 ZN
16	H18080C	1	REC'R WLDMT, 5" FLAT, 60° ANG.
17	H19911	1	TOW HOOK/MUDFLAP BRACKET



PARTIAL VIEW AT FRONT SIDE OF HITCH ASSEMBLY

MOUNTING HARDWARE IS THE SAME ON EACH SIDE OF HITCH



ASSEMBLED VIEW

HDW2947
REVA ECO 1611

REPRODUCTION IN PART OR AS A WHOLE WITHOUT THE WRITTEN PERMISSION OF HITCHDOC, MFG. IS PROHIBITED.

ALWAYS CHECK BOLT LENGTH FOR TIRE CLEARANCE