



131 County Rd. 34E.  
Jackson, MN 56143  
www.hitchdoc.com

Telephone 1-800-446-8222

507-847-4049

Fax 507-847-5100

questions@hitchdoc.com

## **HARLEY DAVIDSON FATBOY '07-UP**

### **H15116 Installation Instructions**

**\*ALWAYS CHECK BOLT LENGTH FOR TIRE CLEARANCE\***

**This hitch is designed for a completely stock motorcycle. If the rear shocks, suspension, or tire have been adjusted/changed in any way, it is up to the customer to verify that there isn't any interference between the hitch and any part of the motorcycle.**

These instructions are written as you are installing the hitch from the back of the bike so "left" would refer to the roadside and "right" would refer to the curbside.

Have a friend help with installing the hitch. We recommend using blue "Loctite" on all bolts so that they do not become loose during your ride.

Read all instructions carefully before attempting installation. Do not fully tighten bolts until installation is complete, unless instructed to do so.

1. Unpack the hitch and verify that all the parts and fasteners are present and free of defects. Refer to the hitch drawing to identify the parts included with the hitch.
2. Remove the (2) fender strut bolts closest to the tail lights from each side of the fender and frame. Set the hitch behind the rear tire of the bike and slowly raise it into position so that the left and right side arms are close to lining up with the mounting holes in the fender while a friend helps hold the chrome fender struts in position, one side at a time.
3. Insert the (2) 3/8" x 1-1/4" Torx button head bolts [*Item 10, H17999*] with thin washers [*Item 6, H17213*] through the hitch side arm and strut then begin threading the bolts into the holes in the fender (do not fully tighten, leave loose until all four bolts have been started into the fender). Do the same on the opposite side. Now the bolts can be fully tightened, alternate from right front to left rear, then left front and right rear to help keep the hitch centered on the fender.
4. (*Optional*) Install the mud flap/safety chain bracket [*Item 12, H19903*] using the 1/4"-20 x 1" hex bolts [*Item 5, H17019*], 1/4" flat washers [*Item 4, H17008*], 1/4" lock washers [*Item 2, H17003*], and 1/4" hex nuts [*Item 3, H17004*].

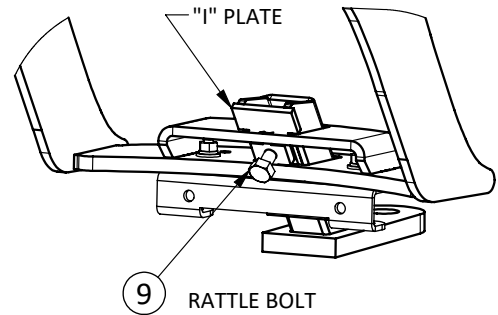
5. Insert the shaft of the chrome receiver [*Item* 11, H18005C] up into the bottom of the chrome receiver bracket and temporarily insert the receiver pin [*Item* 7, H17890C] through the holes of both parts (it doesn't matter which side of the bracket the pin is inserted). To remove excess rattle of the receiver, tighten the 3/8"-24 x 3/4" rattle bolt [*Item* 9, H17903] on the front side of the chrome receiver bracket (behind the tire). Keep tightening until when you remove the receiver pin, the receiver stays in place. Now, holding onto the bottom of the receiver, slowly loosen the bolt (about a quarter turn or less), just until the receiver is able to be removed from the chrome receiver bracket. Reinsert the receiver and the pin and secure it by inserting the hair pin clip [*Item* 8, H17899] through the hole in the end of the pin by pushing firmly until the middle of the clip is over the pin.

It is the operator's responsibility to periodically check all fasteners/mounting hardware to ensure none have come loose during use and to check for any signs of wear.

Thank you for purchasing a quality hitch made by Hitchdoc, Mfg. Enjoy!

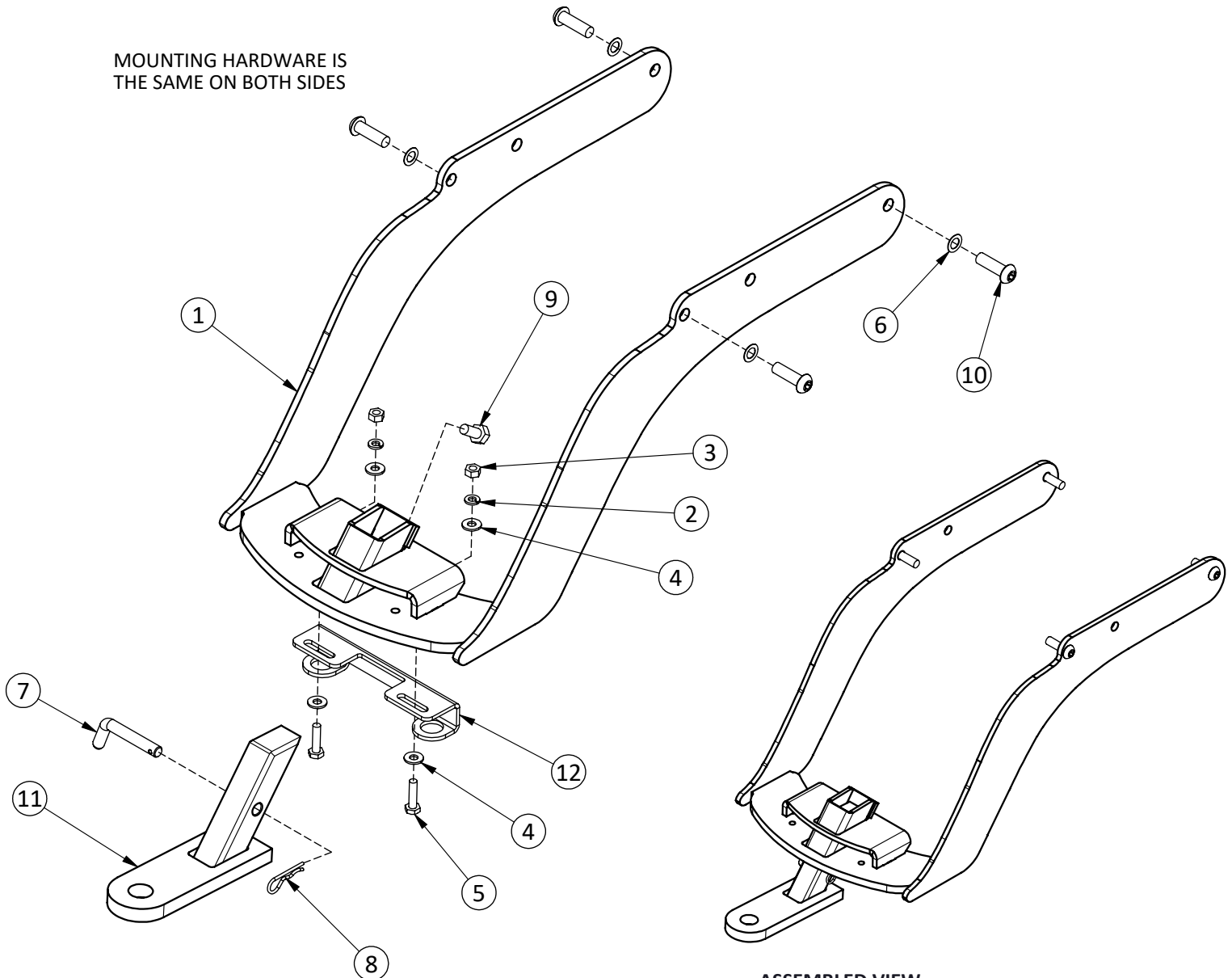
# H15116 HD FATBOY, SOFTAIL, SPRINGER '07-'08 HITCH

ITEM NO.	PART NUMBER	QTY.	DESCRIPTION
1	H15116-C	1	RECEIVER HITCH CHROMED
2	H17003	2	WASHER, 1/4" SPLIT-LOCK, ZN
3	H17004	2	NUT, 1/4"-20 HEX, ZN
4	H17008	4	WASHER, 1/4" FLAT USS, ZINC
5	H17019	2	BOLT, 1/4"-20 X 1 HEX, GR5 ZN
6	H17213	4	WASHER, 3/8" FLAT X 5/8 X 0.20 THIN, ZN
7	H17890C	1	RECEIVER PIN, SHORT
8	H17899	1	HAIR PIN, 3/32" X 1-1/4, ZINC
9	H17903	1	BOLT, 3/8"-24 X 3/4 HEX, ZN (RATTLE BOLT)
10	H17999	4	BOLT, 3/8"-16X1-1/4, BHTORX T45, Z
11	H18005C	1	REC'R WLDMT, 4" FLAT, 55° ANG.
12	H19903	1	TOW HOOK/MUDFLAP BRACKET



PARTIAL FRONT VIEW OF ASSEMBLED HITCH

MOUNTING HARDWARE IS THE SAME ON BOTH SIDES



ASSEMBLED VIEW