



131 County Rd. 34E.
 Jackson, MN 56143
 www.hitchdoc.com

Telephone 1-800-446-8222
 507-847-4049
 Fax 507-847-5100
 questions@hitchdoc.com

Harley Davidson Softail (2018 & Newer) H15108 Installation Instructions

ALWAYS CHECK BOLT LENGTH FOR TIRE CLEARANCE

This hitch is designed for a completely stock motorcycle. If the rear shocks, suspension, or tire have been adjusted/changed in any way, it is up to the customer to verify that there isn't any interference between the hitch and any part of the motorcycle.

These instructions are written as you are installing the hitch from the back of the bike so "left" would refer to the roadside and "right" would refer to the curbside.

Have a friend help with installing the hitch. We recommend that you use "Loctite" (blue) on all bolts so that they do not come loose during your ride.

Read all instructions carefully before attempting installation. Do not fully tighten fasteners until installation is complete, unless instructed to do so.

Tools:		
7/32" Hex Bit Socket	T47 Torx Socket	9/16 Wrench
7/16 Wrench	7/16 Socket	Ratchet
Heat Gun	Rubbing Alcohol or Goo Gone	

1. Unpack the hitch and verify that all parts and fasteners are present and free of defects. Refer to the included hitch drawing to help identify the parts included with the hitch.
2. (Optional) Install the mud flap/safety chain bracket [Item 12, H19914] using the 1/4"-20 x 1" hex bolts [Item 5, H17019], 1/4" flat washers [Item 4, H17008], 1/4" lock washers [Item 2, H17003], and 1/4" hex nuts [Item 3, H17004].
3. Remove the backrest and saddle bags (if applicable) and set off to the side. Use a heat gun to remove the two reflectors on both sides of the fender. Once off, use rubbing alcohol or Goo Gone to remove the remaining residue.

We strongly recommend two people are present for the remainder of the installation

4. Place your hand under the rear fender and keep pressure against the interior support bracket as you remove the four bolts on either side of the bike. If they happen to fall out, use the extruded boss to re-align them when you install the hitch.
5. Slide the hitch [Item 1, H15108C] into place from the rear of the motorcycle lining up all four holes in the hitch arms with the holes from the four bolts that were removed. It may be necessary to spread the hitch to get it over the mounts. Install the (2) 3/8" x 1-1/2" button head chrome bolts [Item 6, H17119] in the front most and rear most holes on each side. Do not fully tighten.

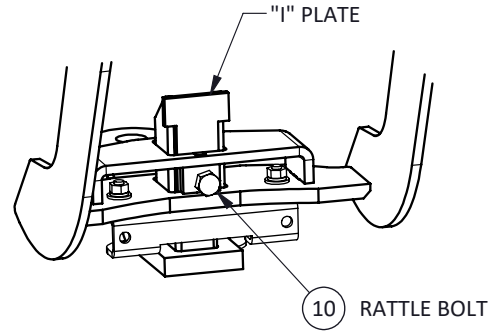
- 6a. For bikes without a backrest or saddle bags, insert one of the 10 mm chrome bushings [*Item 7*, H17543] in each of the center two holes of the hitch on either side of the bike. Install the remaining 3/8 x 1-1/2" button head chrome bolts [*Item 6*, H17119] through the chrome bushing and thread it into the brackets in the bike. Do not fully tighten.
- 6b. For bikes with a backrest or saddle bags, remove the docking kit bushings from the 3/8" button head hex bolts that were on the bike and slide them onto the 3/8" x 2-1/2" button head hex bolts [*Item 13*, HDW2455] that were provided with the hitch. Insert the bolt that has the two chrome docking kit bushings into the front most remaining hole on either side of the bike. Insert the bolt that has one chrome docking kit bushing and one docking kit bushing with the black plastic on it in the remaining rear hole on either side of the bike.
7. Check the hitch for clearance on the fender, and adjust the hitch as necessary. Square the hitch up to the bike and then fully tighten all of the hardware working in a criss-cross pattern to keep the hitch straight. Alternate from right front to left rear, then left front to right rear to help keep the hitch centered on the fender.
8. Re-attach the backrest and saddle bags (if applicable).
9. Insert the shaft of the chrome receiver [*Item 11*, H18030C] up into the bottom of the chrome receiver bracket and temporarily insert the receiver pin [*Item 8*, H17890C] through the holes of both parts (it doesn't matter which side of the bracket the pin is inserted). To remove excess rattle, tighten the 3/8"-24 x 3/4" rattle bolt [*Item 10*, H17903] on the front side of the hitch (behind the tire). Keep tightening until when you remove the pin, the receiver stays in place. Now, holding onto the bottom of the receiver, slowly loosen the bolt (about a quarter turn or less) until the receiver is able to be removed from the hitch. Reinsert the receiver and the pin and secure it by inserting the hair pin clip [*Item 9*, H17899] into the hole in the end of the pin by pushing firmly until the middle of the clip is over the pin.

It is the operator's responsibility to periodically check all fasteners/mounting hardware to ensure none have come loose during use and to check for any signs of wear.

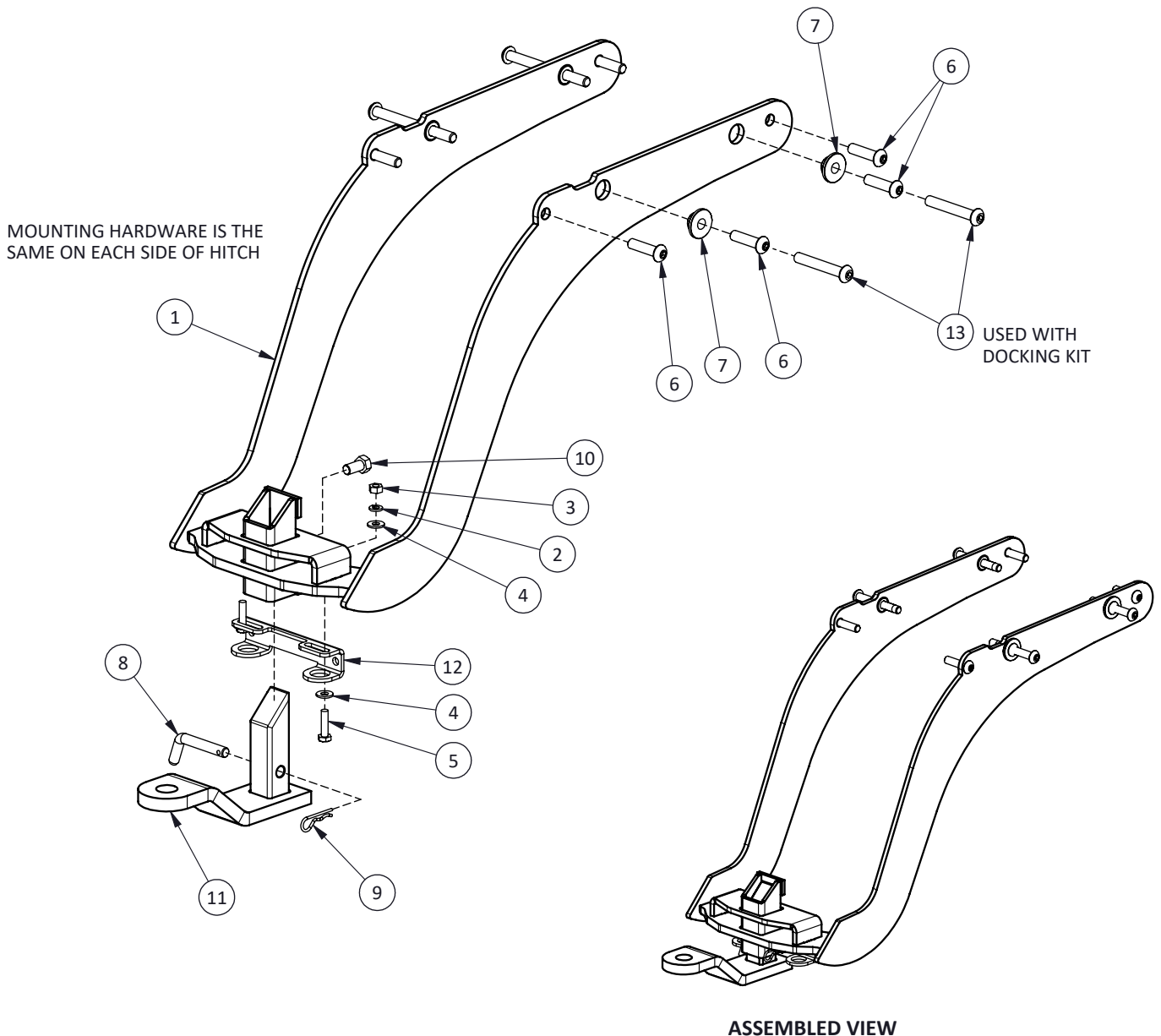
Thank you for purchasing a high quality hitch made by HitchDoc, Mfg. Enjoy!

H15108 HERITAGE HITCH 2018+

ITEM NO.	PART NUMBER	QTY.	DESCRIPTION
1	H15108C	1	HITCH, 2018+ HERITAGE, UNFINISHED
2	H17003	2	WASHER, 1/4" SPLIT-LOCK, ZN
3	H17004	2	NUT, 1/4"-20 HEX, ZN
4	H17008	4	WASHER, 1/4" FLAT USS, ZINC
5	H17019	2	BOLT, 1/4"-20 X 1 HEX, GR5 ZN
6	H17119	8	BOLT, 3/8"-16 X 1-1/2 BHCS, CHROME
7	H17543	4	BUSHING, 10MM INNER, TRIUMPH
8	H17890C	1	RECEIVER PIN, SHORT
9	H17899	1	HAIR PIN, 3/32" X 1-1/4, ZINC
10	H17903	1	BOLT, 3/8"-24 X 3/4 HEX, ZN (RATTLE BOLT)
11	H18030C	1	1-1/2" OFFSET RECEIVER, CHROMED
12	H19914	1	TOW HOOK/MUDFLAP BRACKET
13	HDW2455	4	BOLT, 3/8"-16 X 2-1/2 BHCS, ZN



PARTIAL VIEW AT FRONT SIDE OF HITCH ASSEMBLY



ASSEMBLED VIEW

HDW2456
REVA ECO 1611

REPRODUCTION IN PART OR AS A WHOLE WITHOUT THE WRITTEN PERMISSION OF HITCHDOC, MFG. IS PROHIBITED.

ALWAYS CHECK BOLT LENGTH FOR TIRE CLEARANCE