



131 County Rd. 34E.  
Jackson, MN 56143  
www.hitchdoc.com

Telephone 1-800-446-8222  
507-847-4049  
Fax 507-847-5100  
questions@hitchdoc.com

## Harley Davidson Heritage 2009-2017 H15105 Installation Instructions

### **\*ALWAYS CHECK BOLT LENGTH FOR TIRE CLEARANCE\***

**This hitch is designed for a completely stock motorcycle. If the rear shocks, suspension, or tire have been adjusted/changed in any way, it is up to the customer to verify that there isn't any interference between the hitch and any part of the motorcycle.**

These instructions are written as you are installing the hitch from the back of the bike so "left" would refer to the roadside and "right" would refer to the curbside.

Have a friend help with installing the hitch. We recommend that you use "Loctite" (blue) on all bolts so that they do not come loose during your ride.

Read all instructions carefully before attempting installation. Do not fully tighten bolts until installation is complete, unless instructed to do so.

1. Unpack the hitch and verify that all parts and fasteners are present and free of defects. Refer to the included hitch drawing to help identify the parts included with the hitch.
2. Remove the two bolts on each side that hold the backrest (if equipped) on and set it off to the side.

*\*We strongly recommend two people are present for the remainder of the installation\**

3. Place your hand under the rear fender and keep pressure against the interior support bracket as you remove the two remaining Torx head bolts on either side of the bike. If they happen to fall out, use the extruded boss to re-align them when you install the hitch.
4. Slide the hitch into place from the rear of the motorcycle, lining up all four holes in the hitch arms with the holes from the four bolts that were removed. It may be necessary to spread the hitch to get it over the mounts. Install (2) 3/8"-16 x 1-1/2" button head chrome bolts [*Item 6, H17119*] on either side of the bike. Leave them slightly loose to allow for any necessary adjustment.
5. Install the backrest bolts using the longer supplied machine bolts [*Item 7, H17430*]. Check the hitch for clearance on the fender, and adjust the hitch as necessary. Tighten all four bolts on each side of the bike to secure the hitch working in a criss-cross pattern to keep the hitch straight.
6. Re-attach the backrest and saddle bags to the bike.

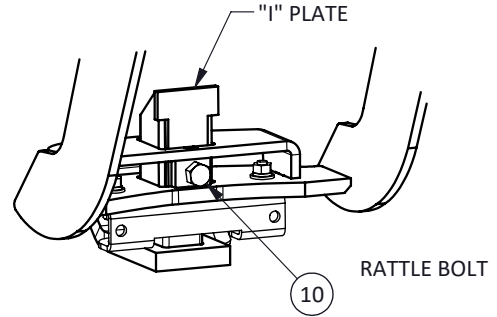
7. (*Optional*) Install the mud flap/safety chain bracket [*Item 12, H19914*] using the 1/4"-20 x 1" hex bolts [*Item 5, H17019*], 1/4" flat washers [*Item 4, H17008*], 1/4" lock washers [*Item 2, H17003*], and 1/4" hex nuts [*Item 3, H17004*].
8. Insert the shaft of the chrome receiver [*Item 11, H18030C*] up into the bottom of the painted receiver bracket and temporarily insert the receiver pin [*Item 8, H17890C*] through the holes of both parts (it doesn't matter which side of the bracket the pin is inserted). To remove excess rattle, tighten the 3/8"-24 x 1/2" rattle bolt [*Item 10, H17913*] on the front side of the hitch (behind the tire). Keep tightening until when you remove the pin, the receiver stays in place. Now, holding onto the bottom of the receiver, slowly loosen the bolt (about a quarter turn or less) until the receiver is able to be removed from the hitch. Reinsert the receiver and the pin and secure it by inserting the hair pin clip [*Item 9, H17899*] into the hole in the end of the pin by pushing firmly until the middle of the clip is over the pin.

It is the operator's responsibility to periodically check all fasteners/mounting hardware to ensure none have come loose during use and to check for any signs of wear.

Thank you for purchasing a quality hitch made by HitchDoc, Mfg. Enjoy!

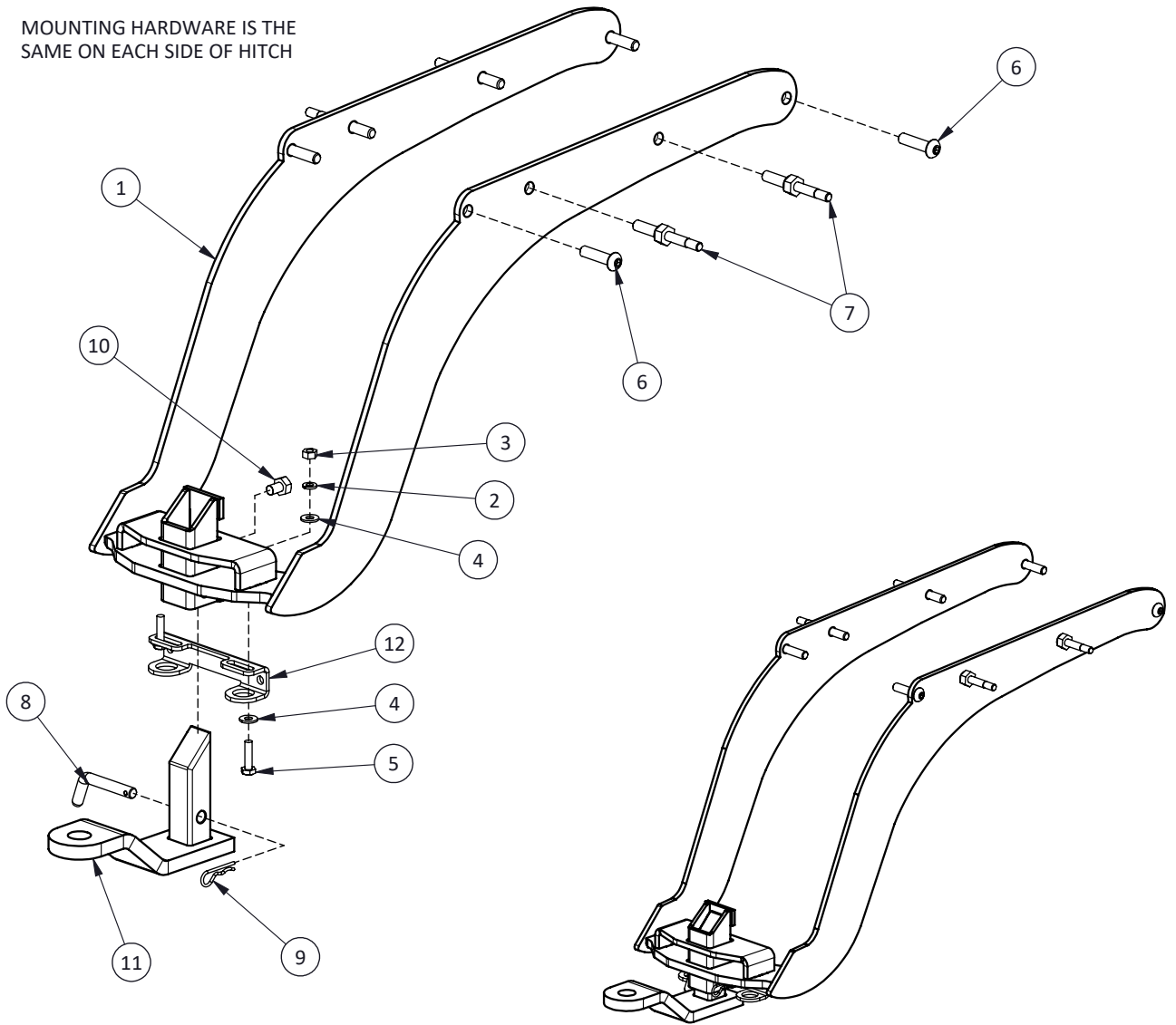
# H15105 HD HERITAGE HITCH '09-'17

ITEM NO.	PART NUMBER	QTY.	DESCRIPTION
1	H15105C	1	HERITAGE HITCH, 2009+
2	H17003	2	WASHER, 1/4" SPLIT-LOCK, ZN
3	H17004	2	NUT, 1/4"-20 HEX, ZN
4	H17008	4	WASHER, 1/4" FLAT USS, ZINC
5	H17019	2	BOLT, 1/4"-20 X 1 HEX, GR5 ZN
6	H17119	4	BOLT, 3/8"-16 X 1-1/2 BHCS, CHROME
7	H17430	4	SPEC. BOLT, MACH'D, LTH 3.13, ZINC
8	H17890C	1	RECEIVER PIN, SHORT
9	H17899	1	HAIR PIN, 3/32" X 1-1/4, ZINC
10	H17913	1	BOLT, 3/8"-24 X 1/2 HEX, GR5 ZN
11	H18030C	1	RECEIVER, 1-1/2" OFFSET, CHROME
12	H19914	1	TOW HOOK/MUDFLAP BRACKET



PARTIAL VIEW AT FRONT OF HITCH ASSEMBLY

MOUNTING HARDWARE IS THE SAME ON EACH SIDE OF HITCH



ASSEMBLED VIEW