



131 County Rd. 34E.
Jackson, MN 56143
www.hitchdoc.com

Telephone 1-800-446-8222
507-847-4049
Fax 507-847-5100
questions@hitchdoc.com

Harley Davidson Street Bob 2006-2008

H15075 Installation Instructions

ALWAYS CHECK BOLT LENGTH FOR TIRE CLEARANCE

This hitch is designed for a completely stock motorcycle. If the rear shocks, suspension, or tire have been adjusted/changed in any way, it is up to the customer to verify that there isn't any interference between the hitch and any part of the motorcycle.

These instructions are written as you are installing the hitch from the back of the bike so "left" would refer to the roadside and "right" would refer to the curbside.

Have a friend help with installing the hitch. We recommend that you use "Loctite" (blue) on all bolts so that they do not come loose during your ride.

Read all instructions carefully before attempting installation. Do not fully tighten fasteners until installation is complete, unless instructed to do so.

1. Unpack the hitch and verify that all parts and fasteners are present and free of defects. Refer to the included hitch drawing to help identify the parts included with the hitch.
2. Remove saddle bags if your bike has them.
3. Use a jack to lift the bike up until the rear tire drops so that you can remove the bolt that attaches the turn signals. This bolt is located on the inside of the fender and threads into the side of the turn signal. If the tire does not drop far enough to remove the turn signal bolt you may have to remove the shock assemblies to allow the tire to drop out of the way. Only remove the turn signal bolts at this time. The front fender bolts should be left in place to keep the fender from dropping down and possibly getting damaged.
4. The wires leading to the turn signals will have to be cut so that the hitch can be installed. Cutting the wires on the inside of the fender is recommended for ease of reattaching them later. The turn signal wires will be inserted through the extra hole in the hitch which is in front of the rear hole used to mount the hitch. The use of any sort of splice close to the turn signal housing is not recommended because it could interfere with installation of the hitch. See the included installation sheet for clarification on what each hole is used for. The turn signals should be mounted on the outside of the hitch side arms.

5. Set the hitch behind the rear tire of the bike and slowly raise it into position so that the left and right side arms are close to lining up with the rear mounting holes in the fender. Have a friend help position the hitch to reduce the chances of scratching the fender or the chrome hitch. The turn signal wires will be inserted through the extra hole in the hitch so have a friend help hold things in place while the wires are being threaded through the hitch side arm. Insert longer bolts to replace the existing turn signal mount bolts. Insert the bolts through the inside of the fender so the head of the bolt is inside the fender. The bolt will go through the fender, fender support strut, hitch side arm, turn signal spacer and then it threads into the turn signal body. Do not fully tighten the bolts yet.
6. Now you can remove the front fender mount bolts and align the holes in the hitch with the holes in the fender support strut.
7. Insert the bushings [*Item 8, H17522*] between the hitch side arms and the fender support struts, and then you can insert the 3/8"-16 x 1-1/2" button head bolts [*Item 6, H17119*] with the 3/8" flat washers [*Item 7, H17213*]. Do not fully tighten the bolts yet. Make sure the turn signals are positioned properly and that none of the wires are pinched between the hitch side arms and the fender support struts.
8. You can now fully tighten the bolts using a criss-cross pattern alternating from right front to left rear, then left front to right rear to help keep the hitch centered properly over the tire.
9. (*Optional*) Install the mud flap/safety chain bracket [*Item 9, H19914*] using the 1/4"-20 x 1" hex bolts [*Item 5, H17019*], 1/4" flat washers [*Item 4, H17008*], 1/4" lock washers [*Item 2, H17003*] and 1/4" hex nuts [*Item 3, H17004*].

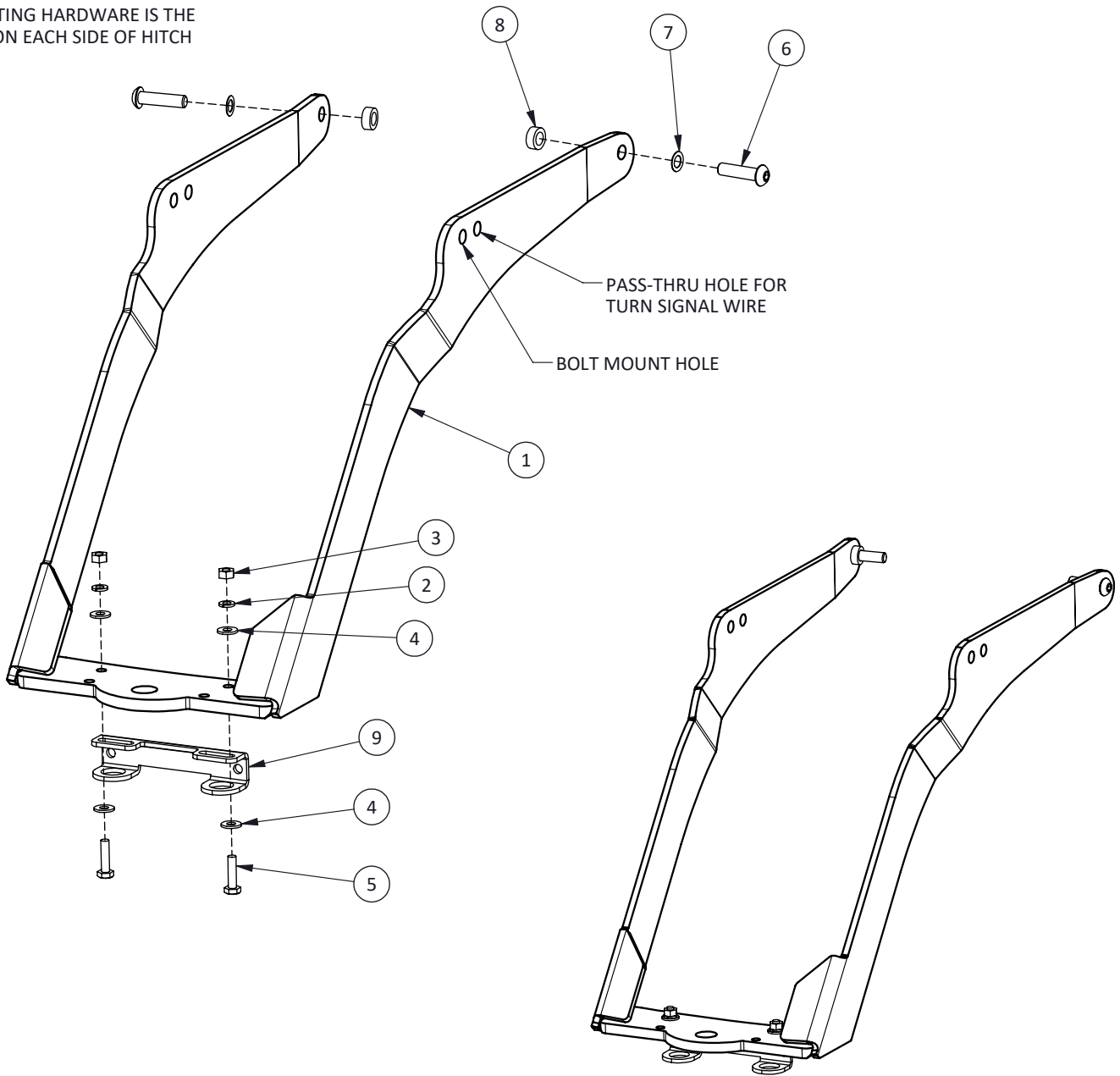
It is the operator's responsibility to periodically check all fasteners/mounting hardware to ensure none have come loose during use and to check for any signs of wear.

Thank you for purchasing a high quality hitch made by HitchDoc, Mfg. Enjoy!

H15075 FXDB STREET BOB HITCH 06-08

ITEM NO.	PART NUMBER	QTY.	DESCRIPTION
1	H15075C	1	FXDB STREET BOB HITCH
2	H17003	2	WASHER, 1/4" SPLIT-LOCK, ZN
3	H17004	2	NUT, 1/4"-20 HEX, ZN
4	H17008	4	WASHER, 1/4" FLAT USS, ZINC
5	H17019	2	BOLT, 1/4"-20 X 1 HEX, GR5 ZN
6	H17119	2	BOLT, 3/8"-16 X 1-1/2 BHCS, CHROME
7	H17213	2	WASHER, 3/8" FLAT X 5/8 X 0.20 THIN, ZN
8	H17522	2	BUSHING, 0.68 OD X 0.41 ID X 0.26, CHROME
9	H19914	1	TOW HOOK/MUDFLAP BRACKET

MOUNTING HARDWARE IS THE SAME ON EACH SIDE OF HITCH



HDW2993
REVA ECO 1611

REPRODUCTION IN PART OR AS A WHOLE WITHOUT THE WRITTEN PERMISSION OF HITCHDOC, MFG. IS PROHIBITED.

ALWAYS CHECK BOLT LENGTH FOR TIRE CLEARANCE