



131 County Rd. 34 E. Jackson MN, 56143 1.800.446.8222
www.eagleplows.com

2865 – KYMCO 450i/PROWLER 500 PLOW MOUNT

Use the attached page to help with part identification during installation.

Tools:	
10mm Socket	1/2 Socket
14mm Socket	9/16 Socket
Ratchet	9/16 Wrench
3/8 Drill Bit	Drill

Plow Mount Installation:

STEP 1: Remove the four M6 bolts that attach the lower plastic bumper to the front of the machine. Remove the two bolts that attach the winch mount to the bumper frame tube. There are weld nuts on the backside of the winch mount so only a ratchet will be needed to remove the bolts.

NOTE: The winch will need to be supported when these two bolts are removed so that the bolts can be re-inserted once the plow mount is lifted into place.

STEP 2: Lift the plow mount (Item 1) up to the bottom of the machine and line the two holes in the front of the plow mount up with the holes where the M10 bolts were just removed. Re-insert the same bolts through the plow mount, through the winch mount, and thread back into the frame. Do not fully tighten.

NOTE: If the winch mount is not mounted to the front frame tube, then use the 3/8 x 3" hex bolts (Item 11), 3/8 flat washers (Item 10) and 3/8 serrated flange nuts (Item 8) to attach the front part of the plow mount to the front frame tube.

STEP 3: Line the outer ears on the plow mount up with the threaded holes in the welded-on tabs on either side of the frame on the front of the machine. Place a lock washer (Item 4) and a flat washer (Item 6) on each of the M6 x 25mm bolts (Item 15). Thread each of the bolts through the ears in the plow mount and into the machine. Do not fully tighten,

STEP 4: Push the plow mount up flush against the underside of the machine. Use the inner two slots at the rear of the mount as a template to drill through the plastic skid plate on the inside of the frame tubes. Place the two strap weldments (Item 2) over the frame tubes and line them up with the rear slots in the mount below. Place a 5/16 lock washer (Item 5) and a 5/16 flat washer (Item 7) on each of the four 5/16 x 1-1/4" hex bolts (Item 9). Insert the bolts through the rear slots in the plow mount and thread into the strap above. Do not fully tighten.

STEP 5: Square the mount up to the machine and then fully tighten all of the hardware working in a criss-cross pattern to keep the mount straight.

NOTE: The lower plastic bumper will need to be trimmed to fit around the plow mount if it is going to be reinstalled.

Attaching the Push Tube to the Plow Mount:

STEP 1: Roll the UTV over the push tube assembly.

STEP 2: Lift the push tube up to the plow mount and line the holes on the push tube up with the ears on the plow mount.

STEP 3: Insert each of the 3/4 x 2" clevis pins (Item 13) through the holes on the mount and through the ears on the push tube. Secure in place using the hair pin clips (Item 14).

STEP 4: Attach the lift system of choice and the plow is ready for use.

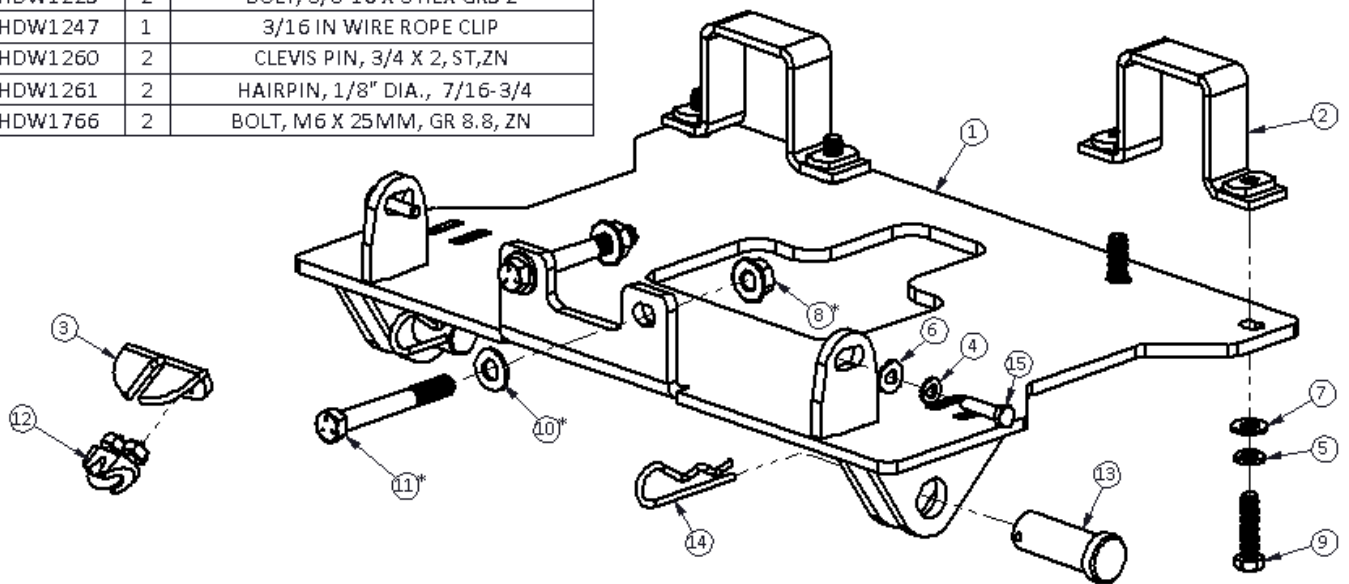
Removing the Push Tube from the Plow Mount:

Reverse the previous steps to remove the push tube. Once the 3/4" pins are removed, place them back into the holes on the push tube assembly with the hair pin clips to prevent them from getting lost when the plow is not in use.

Additional Notes:

- Periodically check all mounting hardware.
- (Optional) Mount the cable stop (Item 3) using the wire clip (Item 12) along the winch cable to prevent interference between the plow system and the machine when the plow is lifted.

ITEM NO.	PART NUMBER	QTY	DESCRIPTION
1	2865-3	1	PLOW MOUNT WLDMT
2	2865-5	2	STRAP WLDMT, U-SHAPE
3	3918-4	1	CABLE STOP
4	H17003	2	LOCKWASHER, 1/4" ZINC
5	H17111	4	5/16" LOCKWASHER
6	HDW151	2	WASHER, 1/4" FLAT, SAE, Z
7	HDW154	4	WASHER, 5/16" FLAT, SAE, Z
8	HDW397	2	NUT, 3/8-16UNC HEX FLG SERRATED, ZINC
9	HDW569	4	BOLT, 5/16-18 X 1-1/4" HEX GR5
10	HDW1223	2	WASHER, 3/8" FLAT, SAE, Z
11	HDW1225	2	BOLT, 3/8-16 X 3 HEX GR5 Z
12	HDW1247	1	3/16 IN WIRE ROPE CLIP
13	HDW1260	2	CLEVIS PIN, 3/4 X 2, ST,ZN
14	HDW1261	2	HAIRPIN, 1/8" DIA., 7/16-3/4
15	HDW1766	2	BOLT, M6 X 25MM, GR 8.8, ZN



*RE-USE FACTORY M10 BOLT ON MACHINES THAT HAVE A FACTORY INSTALLED WINCH MOUNT