



131 County Rd. 34 E. Jackson MN, 56143 1.800.446.8222  
www.eagleplows.com

## 2813; 2814 Kubota RTV Plow Mount Installation Instructions

Use the attached page to help with part identification during installation.

Tools:	
19mm Wrench or Socket w/Ratchet	9/16" Wrench & Socket w/Ratchet
3/8" Drill Bit & Drill	

### **Plow Mount Installation:**

**STEP 1:** Place a lock washer (Item 5) and a flat washer (Item 6) on each of the M12 x 35mm long bolts (Item 12) provided. Hold the plow mount (Item 1) up to the front bumper of the RTV and align the four holes/slots in the front of the mount up with the four holes in the front bumper. Start each of the 12mm bolts in each of the four holes. Do not fully tighten.

**STEP 2:** Use the mount as a template to drill four holes through the bottom portion of the bumper.

**\*NOTE:** On RTV-X series the inside holes on the plow mount line up with slots that already exist in the bumper so the outer two holes are the only ones that will need to be drilled.

**STEP 3:** Place a flat washer (Item 8) on each of the 3/8 x 1-1/4" bolts (Item 7) and place them through the holes in the plow mount, through the holes just drilled in the bumper, and then place a flat washer (Item 8) on the bolt and start a 3/8 Nylock nut (Item 4) on the bolt. Do not fully tighten. Continue with the three remaining holes in the plow mount.

**\*\*NOTE:** On older RTV-X series, place Item 3 on the inside of the bumper on the inner two most slots before putting the flat washer (Item 8) and Nylock nut (Item 4) on the bolts. On newer RTV-X series, the middle bolts will not be used.

**STEP 4:** Square the mount up to the machine and then fully tighten all of the bolts working in a criss-cross pattern to keep the mount straight.

### **Attaching Push Tube to the Plow Mount:**

**STEP 1:** Roll the RTV over the push tube assembly.

**STEP 2:** Lift the push tube up to the plow mount and line the holes up on the push tube with the ears on the plow mount.

**STEP 3:** Insert the 3/4" pins (Item 10) into the holes and secure using the hair pin clips (Item 11).

**STEP 4:** Attach the lift system of choice and the plow is ready for use.

### **Removing the Push Tube and Plow Mount:**

Reverse the previous steps to remove the push tube. Once the 3/4" pins are removed, place them back into the holes on the push tube assembly with the hair pin clips to prevent them from getting lost when the push tube is not in use.

## **Additional Notes:**

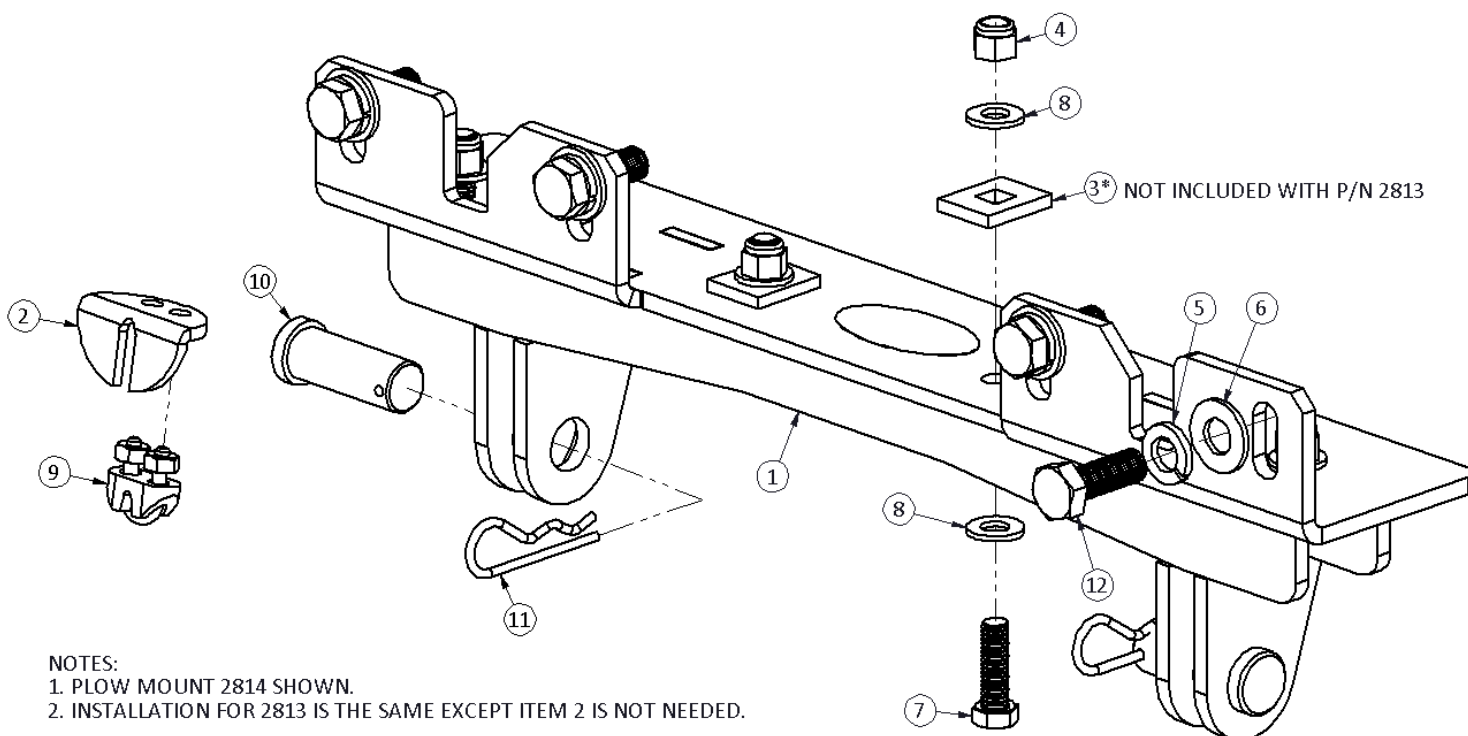
- (Optional) Mount the cable stop (Item 2) using the wire clip (Item 9) along the winch cable to prevent interference between the plow system and the machine when the plow is lifted.

**It is the operator's responsibility to periodically check all fasteners/mounting hardware to ensure none have come loose during use and to check for any signs of wear.**

**Do NOT plow at speeds over 5mph. Doing so will void warranty on any parts that become damaged or break.**

ITEM NO.	PART NUMBER	QTY	DESCRIPTION
1	2814-2	1	PLOW MOUNT WLDMT, KUBOTA
2	3918-4	1	CABLE STOP
3	3938-3*	2	TAB
4	H17043	4	NUT, 3/8-16 NYLOCK, ZINC
5	HDW120	4	LOCKWASHER, 1/2" HELICAL SPR., STEEL ZINC
6	HDW155	4	WASHER, FLAT 1/2 SAE, STL ZINC
7	HDW417	4	BOLT, 3/8-16 X 1-1/4 HEX HD, ZINC
8	HDW1223	8	WASHER, 3/8" FLAT, SAE, Z
9	HDW1247	1	3/16 IN WIRE ROPE CLIP
10	HDW1260	2	CLEVIS PIN, 3/4 X 2, ST,ZN
11	HDW1261	2	HAIRPIN, Ø1/8 X 2-1/2" Z
12	HDW1504	4	BOLT, M12-1.25X35MM HEX 8.8ZN

\* NOT INCLUDED WITH 2813 PLOW MOUNT.



### NOTES:

1. PLOW MOUNT 2814 SHOWN.
2. INSTALLATION FOR 2813 IS THE SAME EXCEPT ITEM 2 IS NOT NEEDED.