



131 County Rd. 34 E. Jackson MN, 56143 1.800.446.8222
www.eagleplows.com

2839 – Honda Pioneer 500 Plow Mount

Use the attached page to help with component identification during installation.

Tools:	
14mm Wrench or Ratchet	1/2" Wrench or Ratchet
3/8" Drill Bit & Drill	

Plow Mount Installation:

STEP 1: Remove the two M10 x 20mm bolts on either side of the lower front bumper.

STEP 2: Hold the plow mount up to the machine and line the slotted holes on either side of the mount up with the holes where the M10 bolts were just removed from. Place a 7/16" lock washer (Item 2) on each of the M10 x 25mm bolts (Item 7), and start each bolt in the holes to hold the mount in place. Do not fully tighten.

STEP 3: Square the mount up to the machine. Using the mount as a template, drill two 3/8" holes through the inner most slots at the back of the mount through the plastic skid plate to allow a U-bolt to pass through.

STEP 4: Place one of the 5/16 x 1-1/2 x 2-3/4" U-bolts (Item 6) over the square frame tube and through the slots at the rear of the mount. Place a 5/16 flat washer (Item 3) on each side of the U-bolt and start a 5/16 Nylock nut (Item 8) on each end. Repeat using the other U-bolt on the other side of the mount.

STEP 5: Once all of the bolts have been started, square the mount up again to the machine and fully tighten all of the hardware in a criss-cross pattern to keep the mount straight.

Attaching the Push Tube to the Plow Mount:

STEP 1: Roll the UTV over the push tube assembly.

STEP 2: Lift the push tube up to the plow mount and line the holes up on the push tube with the ears on the plow mount.

STEP 3: Insert the 3/4" pins (Item 4) into the holes and secure in place using the hair pins (Item 5).

STEP 4: Attach the lift system of choice and the plow is ready for use.

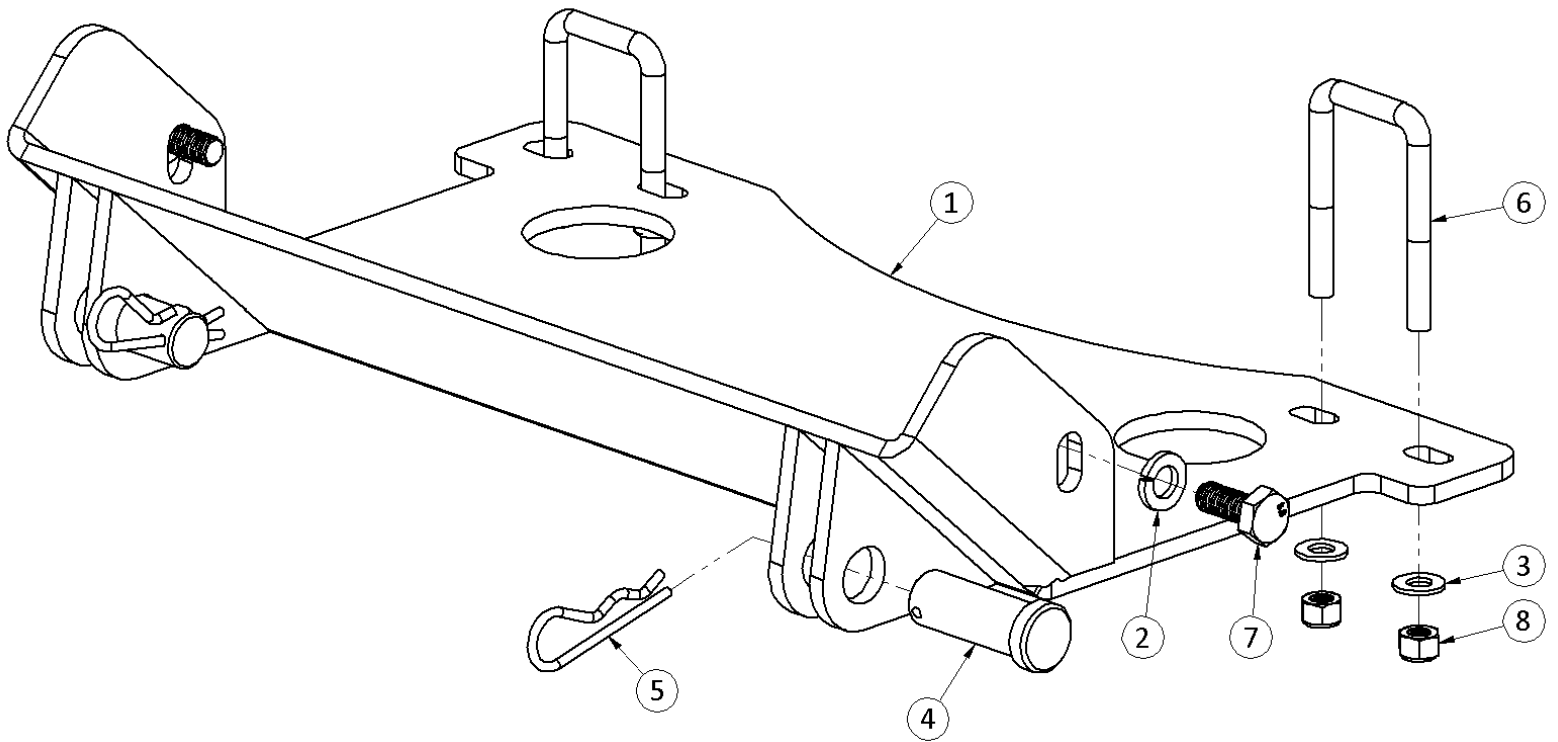
Removing the Push Tube and the Plow Mount:

Reverse the previous steps to remove the push tube. Once the 3/4" pins are removed, place them back through the holes on the ears of the push tube assembly with the hair pins to prevent them from getting lost when the plow is not in use.

It is the operator's responsibility to periodically check all fasteners/mounting hardware to ensure none have come loose during use and to check for any signs of wear.

Do NOT plow at speeds over 5mph. Doing so will void warranty on any parts that become damaged or break.

ITEM NO.	PART NUMBER	QTY	DESCRIPTION
1	2839-2	1	MOUNT PLATE WLDMT
2	H3566	2	LOCKWASHER, 7/16" HELICAL SPR., ZINC
3	HDW154	4	WASHER, 5/16 FLAT SAE, ZN
4	HDW1260	2	CLEVIS PIN, 3/4 X 2, ST,ZN
5	HDW1261	2	HAIRPIN, Ø1/8 X 2-1/2" Z
6	HDW1301	2	U-BOLT, 5/16X1-1/2X2-3/4 SQ ZN
7	HDW1348	2	BOLT, M10-1.25 X 25, HEX
8	HDW1388	4	NUT, 5/16"-18 NYLON-INSERT, STL ZN



Hardware is from HDW1575 hardware kit.