



131 County Rd. 34 E. Jackson MN, 56143 1.800.446.8222
www.eagleplows.com

2842 – Kawasaki 750 Teryx Plow Mount

Use the attached drawing to help with part identification during installation.

Tools:	
1/2" Wrench or Ratchet	9/16" Wrench & Ratchet
3/8" Drill Bit & Drill	

Plow Mount Installation:

***NOTE:** Some plastic will need to be trimmed on the front to allow the mount to fit more securely.

STEP 1: Line the two holes in the front of the plow mount (Item 1) up to the underside of the front frame plate. Place a 3/8 x 1-1/4" bolt (Item 6) with a 3/8" flat washer (Item 7) through the hole on the plow mount and the front frame plate and loosely tighten a 3/8" Nylock nut (Item 3) on the end of the bolt. Repeat for the other hole on the front of the mount plate.

STEP 2: Use the plow mount as a template to drill the necessary 3/8" holes through the skid plate on the underside of the UTV.

STEP 3: Slide the mount strap (Item 2) over the top of the skid plate with the nuts facing up towards the top of the UTV and align the holes in the strap with the holes that were just drilled.

STEP 4: Use the remaining 5/16 x 3-3/4" bolts (Item 10), 5/16" lock washers (Item 4), and 5/16" flat washers (Item 5) to secure the back part of the plow mount to the UTV using the mounting straps. Do not fully tighten the bolts

STEP 5: Adjust the plow mount so it is centered on the underside of the UTV frame, then tighten all of the bolts in a criss-cross pattern to keep the mount straight. Do not over tighten these bolts.

Attaching the Push Tube to the Plow Mount:

STEP 1: Roll the UTV over the push tube assembly.

STEP 2: Lift the push tube up to the plow mount and line the holes up on the push tube and ears on the plow mount.

STEP 3: Insert the 3/4" pins (Item 8) into the holes, and snap the hair pin clips (Item 9) onto the 3/4" pins.

STEP 4: Attach the lift system of choice and the plow is ready for use.

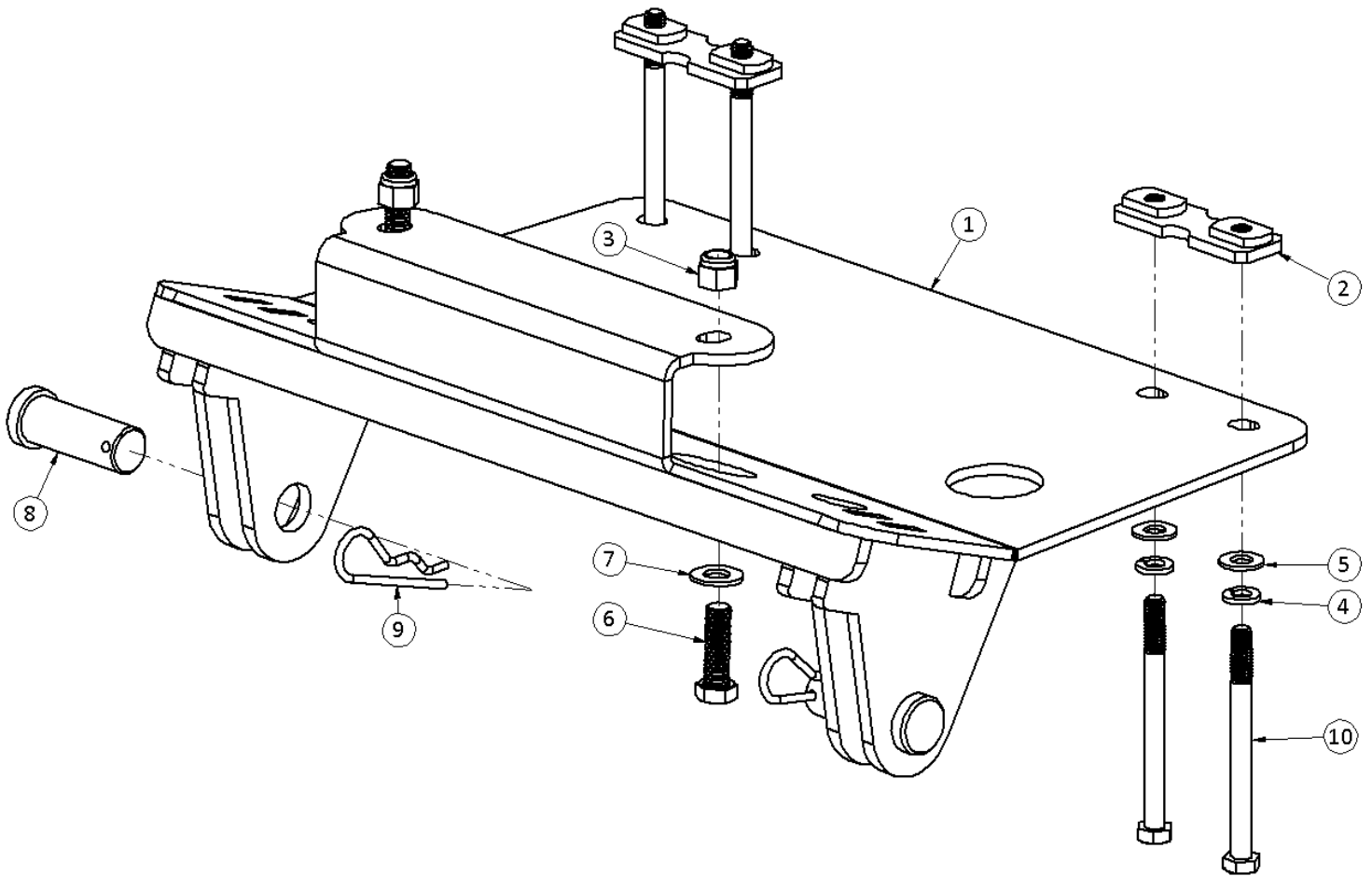
Removing the Push Tube and the Plow Mount:

Reverse the previous steps to remove the push tube. Once the 3/4" pins are removed, place them back into the holes on the push tube assembly with the hair pin clips to prevent them from getting lost when the plow is not in use.

It is the operator's responsibility to periodically check all fasteners/mounting hardware to ensure none have come loose during use and to check for any signs of wear.

Do NOT plow at speeds over 5mph. Doing so will void warranty on any parts that become damaged or break.

ITEM NO.	PART NUMBER	QTY	DESCRIPTION
1	2842-6	1	PLOW MOUNT WLDMT
2	2860-6	2	2860 STRAP
3	H17043	2	NUT, 3/8-16 NYLON-INSERT, ZN
4	H17111	4	WASHER, 5/16" SPLIT-LOCK, ZN
5	HDW154	4	WASHER, 5/16 FLAT SAE, ZN
6	HDW417	2	BOLT, 3/8"-16 X 1-1/4 HEX, GR5 ZN
7	HDW1223	2	WASHER, 3/8" FLAT, SAE, ZINC
8	HDW1260	2	CLEVIS PIN, 3/4 X 2, ST,ZN
9	HDW1261	2	HAIRPIN, Ø1/8 X 2-1/2" Z
10	HDW1400	4	BOLT, 5/16"-18 X 3-3/4 HEX PT, GR5 ZN



Hardware is from HDW1466 hardware kit.