



131 County Rd. 34 E. Jackson MN, 56143 1.800.446.8222
www.eagleplows.com

2863 – KAWASAKI MULE PRO PLOW MOUNT

Use the attached pages to help with part identification during installation. We recommend using Loctite (Blue) on all fasteners. If an American Mfg. winch mount (P/N 1862) was also purchased, that will need to be installed at the same time as the plow mount. Part of the winch mount installation is also shown in these instructions for reference.

Tools:			
1/2" Socket	9/16" Wrench	12mm Socket	14mm Socket
9/16" Socket	Ratchet	13mm Socket	14mm Wrench

Plow Mount Installation:

NOTE: If also installing the 1862 winch mount, on DX, DXT, FX, and FXT models, it will be easier to install the winch mount and plow mount support brackets (Items 4 & 5) with the bumper off. To remove the bumper, remove the two M10 x 75mm hex bolts and flange nuts (one on each side) at the top of the bumper. Be careful not to lose the flat spacer that is between the bumper support tube and the frame. Also, remove the three M8 bolts at the bottom of the bumper in the center of the machine.

STEP 1: Place the backer plate (Item 6) on the inside of the front frame directly in front of the front differential with the slight bend facing out towards the front of the machine. The six holes in the backer plate will line up with the six holes in the front frame.

STEP 2:

If the winch mount **does not** attach to this same location (reference *Figure 1* on Page 3):

Put a 3/8 flat washer (Item 16) on four of the 3/8 x 1-1/4" hex bolts (Item 15). Lift the right support bracket (Item 5) up to the bottom two holes on the left side of the machine (as you are facing the machine). Insert the bolts through the holes in the support bracket, through the holes in the front frame of the machine, and through the corresponding slot in the backer plate. Place another 3/8 flat washer (Item 16) on the bolt and start a 3/8 Nylock nut (Item 8) on the bolt. Do not fully tighten. Repeat for the left support bracket (Item 4). Place a 3/8 flat washer (Item 16) on two of the 3/8 x 1" hex bolts (Item 13). Insert both bolts through the top two remaining holes in the front frame and through the corresponding slot in the backer plate. Place a 3/8 flat washer (Item 16) on each bolt and start a 3/8 Nylock nut (Item 8) on each bolt. Square support brackets up the machine and then fully tighten all six bolts.

If the winch mount **does** attach to this same location (reference *Figure 2* on Page 3):

Put a 3/8 flat washer (Item 16) on four of the 3/8 x 1-1/2" hex bolts (Item 14). Lift the right support bracket (Item 5) and the winch mount up to the front of machine and line the two holes in the support bracket up with the bottom two holes on the left side of the machine (as you are facing the machine) and line up all six of the holes in the winch mount up with the six holes in the front frame. Place the 3/8 bolts through the two bottom left holes in the winch mount, through the holes in the right support brace, through the holes in the front frame, and through the corresponding holes in the backer plate. Place another 3/8 flat washer (Item 16) on each bolt and start a 3/8

Nylock nut (Item 8) on each bolt. Repeat for the left support brace (Item 4). Place a 3/8 flat washer (Item 16) on two of the 3/8 x 1-1/4" hex bolts (Item 15) and insert the bolts through the remaining two holes at the top of the winch mount, through the holes in the front frame, and through the corresponding holes in the backer plate. Place another 3/8 flat washer (Item 16) on both of the bolts and start a 3/8 Nylock nut (Item 8) on each of the bolts. Square the winch mount and each support bracket up to the machine and then fully tighten all six of the bolts. Continue installing the winch following the instructions that came with the winch mount.

NOTE: If the bumper was removed, re-install the bumper now reusing the two M10 x 75mm hex bolts, flange nut and spacer at the top of the bumper. Leave slightly loose for now. Do not re-install the three M8 bolts at the bottom of the bumper.

Reference *Figure 3* on Page 4 for the rest of the installation.

STEP 3: Lift the plow mount (Item 3) up to the front of the bumper. Line the two holes at the top of the plow mount up with the hole in the left and right support brackets that were just installed. Place a 3/8 flat washer (Item 16) on two of the 1-1/4" hex bolts (Item 15) and insert the bolts through the top two holes in the plow mount and through the holes in the support brackets. Place a 3/8 flat washer (Item 16) on each bolt and start a 3/8 Nylock nut (Item 8) on each bolt. Do not fully tighten.

STEP 4: Place a 5/16 lock washer (Item 9) and 5/16 flat washer (Item 12) on four of the 5/16 x 1" hex bolts (Item 11). Slide the longer rear mounting strap (Item 1) over the frame directly above the rear two holes in the plow mount. Hold the mount up flush to the bottom of the machine and insert the bolts through the rear holes in the mount and start them into the weld nuts in the strap above. Do not fully tighten.

STEP 5:

On 2015-2016 models:

Place the small mounting strap (Item 2) over the frame on the right side (passenger side) of the machine. Start the remaining two bolts through the corresponding holes in the mount and into the strap above. Do not fully tighten.

One 2017 and newer models:

Place the small mounting strap (Item 2) over the frame on the left side (driver side) of the machine. Start the remaining two bolts through the corresponding holes in the mount and into the strap above. Do not fully tighten.

STEP 6: Place a 3/8 lock washer (Item 10) and a 3/8 flat washer (Item 16) on each of the M8 x 30mm bolts (Item 20). Line the three holes in the front of the mount up with the three holes where the bolts that attach the bottom of the bumper were removed from. Insert the M8 bolts through the holes in the plow mount and start them into the frame of the machine. Do not fully tighten.

STEP 7: Square the mount up to the machine and then fully tighten all of the hardware working in a criss-cross pattern to keep the mount straight. Fully tighten the two M10 x 75mm hex bolts at the top of the bumper.

Attaching the Push Tube to the Plow Mount:

STEP 1: Roll the UTV over the push tube assembly.

STEP 2: Lift the push tube up to the plow mount and line the holes on the push tube up with the ears on the plow mount.

STEP 3: Insert the 3/4" pins (Item 18) into the holes and secure using the hair pin clips (Item 19).

STEP 4: Attach the lift system of choice and the plow is ready for use.

Removing the Push Tube from the Plow Mount:

Reverse the previous steps to remove the push tube. Once the 3/4" pins are removed, place them back into the holes on the push tube assembly with the hair pin clips to prevent them from getting lost when the plow is not in use.

Additional Notes:

- Periodically check all mounting hardware.
- (Optional) Mount the cable stop (Item 7) using the wire clip (Item 17) along the winch cable to prevent interference between the plow system and the machine when the plow is lifted.

ITEM NO.	PART NUMBER	QTY	DESCRIPTION
1	2862-3	1	STRAP
2	2862-4	1	STRAP
3	2863-3	1	PLOW MOUNT WLDMT, MULE PRO
4	2863-10	1	MULE PRO SPVRT BRACE WLDMT, L
5	2863-14	1	MULE PRO SPVRT BRACE WLDMT, R
6	2863-15	1	MULE PRO BACKER PLATE
7	3918-4	1	CABLE STOP
8	H17043	8	NUT, 3/8-16 NYLOCK
9	H17111	4	5/16" LOCKWASHER
10	HDW112	3	LOCKWASHER, 3/8" HELICAL SPR., ZINC
11	HDW122	4	BOLT, 5/16-18UNCx1.00 HEX HD ZINC
12	HDW154	4	5/16" SAE WASHER
13	HDW220	2	BOLT, 3/8-16 X 1.00 HEX, GR5, Z
14	HDW393	4	BOLT, 3/8-16UNCx1 1/2" HEX HD ZINC
15	HDW417	8	BOLT, 3/8-16UNCx1.25" HEX HD ZINC
16	HDW1223	19	WASHER, 3/8" FLAT, SAE, Z
17	HDW1247	1	3/16 IN WIRE ROPE CLIP
18	HDW1260	2	CLEVIS PIN, 3/4 X 2, ST,ZN
19	HDW1261	2	HAIRPIN, Ø1/8 X 2" Z
20	HDW1634	3	BOLT, M8-1.25X30MM HEXGR8.8 ZN

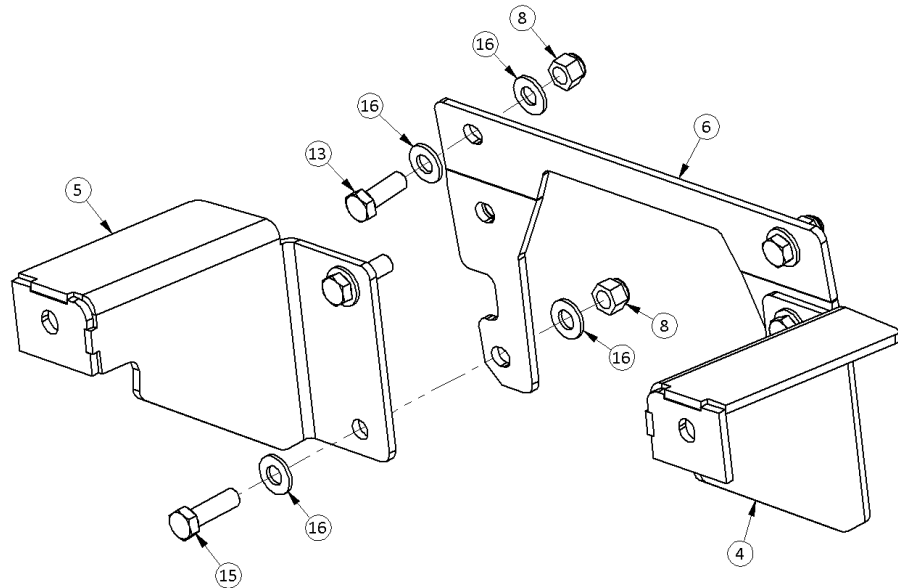


Figure 1

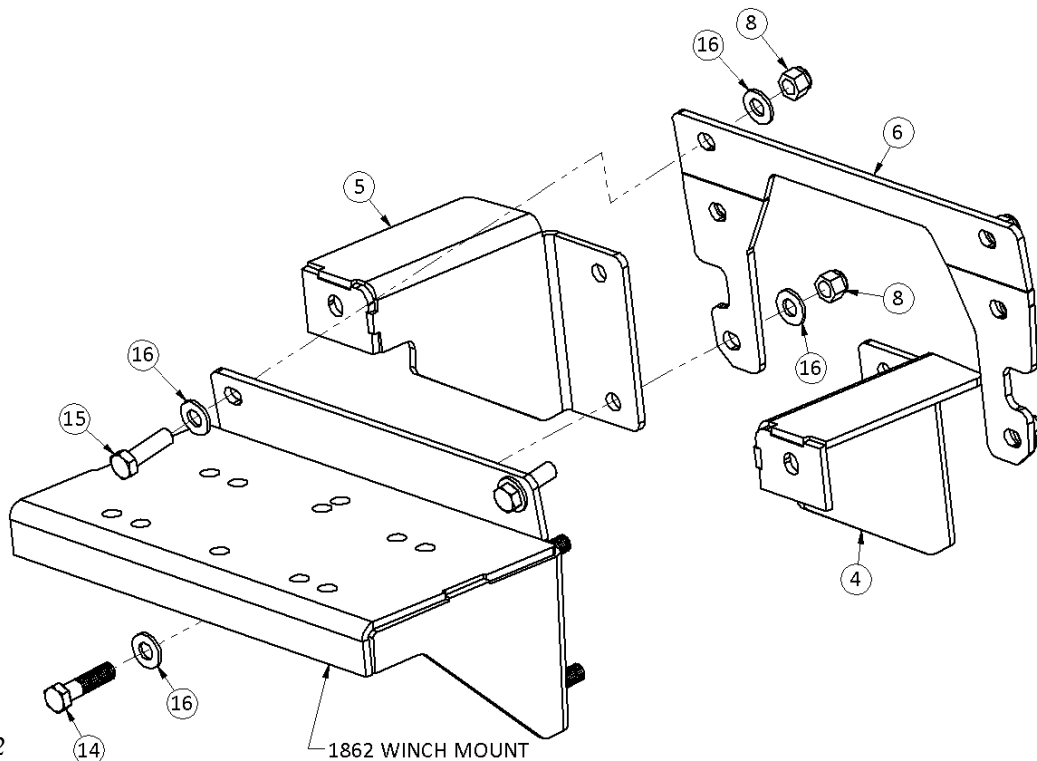


Figure 2

HDW1290

Rev. C
ECO 1539

ITEM NO.	PART NUMBER	QTY	DESCRIPTION
1	2862-3	1	STRAP
2	2862-4	1	STRAP
3	2863-3	1	PLOW MOUNT WLDMT, MULE PRO
4	2863-10	1	MULE PRO SPPRT BRACE WLDMT, L
5	2863-14	1	MULE PRO SPPRT BRACE WLDMT, R
6	2863-15	1	MULE PRO BACKER PLATE
7	3918-4	1	CABLE STOP
8	H17043	8	NUT, 3/8-16 NYLOCK
9	H17111	4	5/16" LOCKWASHER
10	HDW112	3	LOCKWASHER, 3/8" HELICAL SPR., ZINC
11	HDW122	4	BOLT, 5/16-18UNCx1.00 HEX HD ZINC
12	HDW154	4	5/16" SAE WASHER
13	HDW220	2	BOLT, 3/8-16 X 1.00 HEX, GR5, Z
14	HDW393	4	BOLT, 3/8-16UNCx1 1/2" HEX HD ZINC
15	HDW417	8	BOLT, 3/8-16UNCx1.25" HEX HD ZINC
16	HDW1223	19	WASHER, 3/8" FLAT, SAE, Z
17	HDW1247	1	3/16 IN WIRE ROPE CLIP
18	HDW1260	2	CLEVIS PIN, 3/4 X 2, ST,ZN
19	HDW1261	2	HAIRPIN, Ø1/8 X 2" Z
20	HDW1634	3	BOLT, M8-1.25X30MM HEXGR8.8 ZN

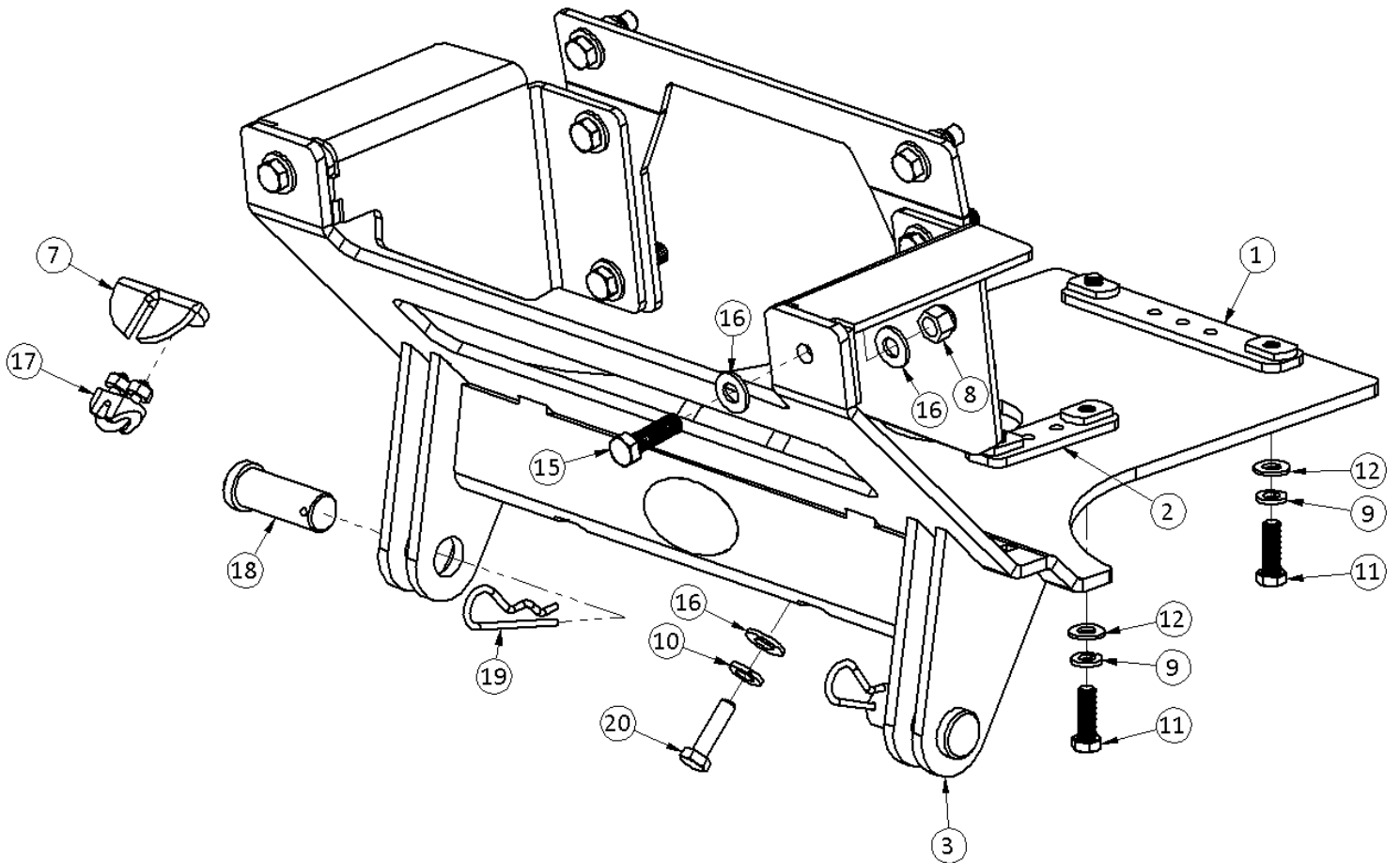


Figure 3